

OPEN ACCESS



Journal of
**Ecology and The
Natural Environment**

May 2019
ISSN 2006-9847
DOI: 10.5897/JENE
www.academicjournals.org



**ACADEMIC
JOURNALS**
expand your knowledge

About JENE

Journal of Ecology and the Natural Environment (JENE) provides rapid publication (monthly) of articles in all areas of the subject such as biogeochemical cycles, conservation, paleoecology, plant ecology etc.

The Journal welcomes the submission of manuscripts that meet the general criteria of significance and scientific excellence. Papers will be published shortly after acceptance. All articles published in JENE are peer-reviewed.

Indexing

The Journal of Ecology and The Natural Environment is indexed in:

[CAB Abstracts](#), [CABI's Global Health Database](#), [Chemical Abstracts \(CAS Source Index\)](#)
[Dimensions Database](#), [Google Scholar](#), [Matrix of Information for The Analysis of Journals \(MIAR\)](#), [Microsoft Academic](#)

JENE has an [h5-index of 10](#) on Google Scholar Metrics

Open Access Policy

Open Access is a publication model that enables the dissemination of research articles to the global community without restriction through the internet. All articles published under open access can be accessed by anyone with internet connection.

The Journal of Ecology and The Natural Environment is an Open Access journal. Abstracts and full texts of all articles published in this journal are freely accessible to everyone immediately after publication without any form of restriction.

Article License

All articles published by Journal of Ecology and The Natural Environment are licensed under the [Creative Commons Attribution 4.0 International License](#). This permits anyone to copy, redistribute, remix, transmit and adapt the work provided the original work and source is appropriately cited. Citation should include the article DOI. The article license is displayed on the abstract page the following statement:

This article is published under the terms of the [Creative Commons Attribution License 4.0](#)
Please refer to <https://creativecommons.org/licenses/by/4.0/legalcode> for details
about [Creative Commons Attribution License 4.0](#)

Article Copyright

When an article is published by in the Journal of Ecology and The Natural Environment, the author(s) of the article retain the copyright of article. Author(s) may republish the article as part of a book or other materials. When reusing a published article, author(s) should;

Cite the original source of the publication when reusing the article. i.e. cite that the article was originally published in the Journal of Ecology and The Natural Environment. Include the article DOI Accept that the article remains published by the Journal of Ecology and The Natural Environment (except in occasion of a retraction of the article)

The article is licensed under the Creative Commons Attribution 4.0 International License.

A copyright statement is stated in the abstract page of each article. The following statement is an example of a copyright statement on an abstract page.

Copyright ©2016 Author(s) retains the copyright of this article.

Self-Archiving Policy

The Journal of Ecology and The Natural Environment is a RoMEO green journal. This permits authors to archive any version of their article they find most suitable, including the published version on their institutional repository and any other suitable website.

Please see <http://www.sherpa.ac.uk/romeo/search.php?issn=1684-5315>

Digital Archiving Policy

The Journal of Ecology and The Natural Environment is committed to the long-term preservation of its content. All articles published by the journal are preserved by [Portico](#). In addition, the journal encourages authors to archive the published version of their articles on their institutional repositories and as well as other appropriate websites.

<https://www.portico.org/publishers/ajournals/>

Metadata Harvesting

The Journal of Ecology and The Natural Environment encourages metadata harvesting of all its content. The journal fully supports and implement the OAI version 2.0, which comes in a standard XML format. [See Harvesting Parameter](#)

Memberships and Standards



Academic Journals strongly supports the Open Access initiative. Abstracts and full texts of all articles published by Academic Journals are freely accessible to everyone immediately after publication.



All articles published by Academic Journals are licensed under the [Creative Commons Attribution 4.0 International License \(CC BY 4.0\)](#). This permits anyone to copy, redistribute, remix, transmit and adapt the work provided the original work and source is appropriately cited.



[Crossref](#) is an association of scholarly publishers that developed Digital Object Identification (DOI) system for the unique identification published materials. Academic Journals is a member of Crossref and uses the DOI system. All articles published by Academic Journals are issued DOI.

[Similarity Check](#) powered by iThenticate is an initiative started by CrossRef to help its members actively engage in efforts to prevent scholarly and professional plagiarism. Academic Journals is a member of Similarity Check.

[CrossRef Cited-by](#) Linking (formerly Forward Linking) is a service that allows you to discover how your publications are being cited and to incorporate that information into your online publication platform. Academic Journals is a member of [CrossRef Cited-by](#).



Academic Journals is a member of the [International Digital Publishing Forum \(IDPF\)](#). The IDPF is the global trade and standards organization dedicated to the development and promotion of electronic publishing and content consumption.

Contact

Editorial Office: jene@academicjournals.org

Help Desk: helpdesk@academicjournals.org

Website: <http://www.academicjournals.org/journal/JENE>

Submit manuscript online <http://ms.academicjournals.org>

Academic Journals
73023 Victoria Island, Lagos, Nigeria
ICEA Building, 17th Floor,
Kenyatta Avenue, Nairobi, Kenya.

Editors

Dr. Abd El-Latif Hesham

Genetics Department
Faculty of Agriculture
Assiut University
Assiut,
Egypt.

Dr. Ahmad Bybordi

Soil and Water Research Department
East Azarbaijan Research Centre for Agriculture and Natural Resources
AREEO, Tabriz,
Iran.

Dr. Marko Sabovljevic

Dept. Plant Ecology
Faculty of Biology
University of Belgrade
Belgrade,
Serbia.

Dr. Sime-Ngando Téléspore

CNRS LMGE, UMR
Université Blaise Pascal
Aubière Cedex,
France.

Dr. Ram Chander Sihag

Zoology Department,
CCS Haryana Agricultural University,
Hisar, India.

Table of Contents

Deforestation impact on ecosystem services in Kamfinsa sub-catchment of Kafue River Basin in Zambia Deuteronomy Kasaro, Elijah Phiri and Imasiku Nyambe	33
Spatio-temporal variations in water and sediment parameters of Abule Agege, Abule Eledu, Ogbe, creeks adjoining Lagos Lagoon, Nigeria Onyena A. P. and Okoro C. A.	46

Full Length Research Paper

Deforestation impact on ecosystem services in Kamfinsa sub-catchment of Kafue River Basin in Zambia

Deuteronomy Kasaro^{1*}, Elijah Phiri² and Imasiku Nyambe¹

¹Department of Soil Science, School of Agricultural Sciences, University of Zambia, Lusaka, Zambia.

²IWRM Center, School of Mines, University of Zambia, Lusaka, Zambia.

Received 23 May 2018, Accepted 5 November 2018

Forests are important in the lives of local communities as they provide poles for construction, wood fuel for cooking, help reduce soil erosion and provide various foods and medicines due to biodiversity. Most local communities depend on forests in supplementing their livelihoods. At the moment, forests are being lost and it is important to understand the impacts of the lost. Therefore, the objective of the study was to provide a holistic evaluation of the impacts of deforestation on ecosystem services in Kamfinsa sub-catchment of Kitwe in Zambia. Loss of forest biomass, biodiversity, and soil erosion were key proxy variables for loss of ecosystem services. Geographical Information System (GIS) and Remote sensing techniques were used to assess the impacts on the ecosystem. The results showed that deforestation reached 576.3 ha per year during the period studied. The forest loss corresponds to an emission of 43.73 ton of carbon per hectare from above and below ground biomass valued at US\$243.60 per hectare. According to this research soil erosion risk assessment, 1.59 ton of soil was lost per hectare per year, equivalent to US\$ 57.20 loss per hectare. The indigenous forest cover reduced from 13,430.5 ha (1990) to 2,904.7 ha (2010), with a corresponding change in NDVI index for loss of forest vigor and biodiversity of 0.56 and 0.32, respectively. The major forest loss occurred from indigenous forests. The study has shown that deforestation in Kamfinsa sub-catchment area calls for the urgent promotion of an integrated and comprehensive approach to addressing the drivers of deforestation to ensure continued supply of ecosystem services.

Key words: Carbon budget, carbon dioxide, emission, forestry, land degradation, natural resource management, remote sensing, water-shade.

INTRODUCTION

Ecosystems drive the primary environmental cycles such as the continuous circulation of water, carbon, and other

nutrients. The water, food and raw materials needed for human livelihood security originate from the ecosystems

*Corresponding author. Email: deutkas@yahoo.co.uk. Tel: +260 977 654130.

Author(s) agree that this article remain permanently open access under the terms of the [Creative Commons Attribution License 4.0 International License](https://creativecommons.org/licenses/by/4.0/)

surrounding human settlements (Falkenmark, 2003). According to Digest (Evans, 2005), human activities have modified these natural cycles, especially in the last 50 years by increasing their freshwater use, carbon dioxide emissions and fertilizer use, which has affected the ecosystem's ability to provide benefits to humans. Historically, the nature and value of earth's life support systems have largely been ignored until their disruption or loss highlighted their importance (Evans, 2005).

There is much interest in valuing the totality of ecosystem services (Costanza et al., 1997); however, such estimation of the total financial value of ecosystem components and services is difficult and may not mean much to the management of ecosystems (Pearce and Pearce, 2001). The appropriate context for economic valuation is, therefore, the value of a small or a discrete change in the provision of goods and services through, say, the loss or gain of forest cover (Secretariat of the Convention on Biological Diversity, 2001).

Deforestation has recently revealed the critical role forests serve in regulating the hydrological cycle through the mitigation of floods, droughts, the erosive forces of wind and rain, and silting of dams and irrigation canals. Forests are one of the most important terrestrial biomes contributing immensely to carbon (C) sequestration and storage, as well as regulating other climate related cycles (Kalaba et al., 2013). Some primary threats associated with land use change include a loss of biodiversity and carbon, nitrogen, and biogeochemical cycles disruption; human-caused invasions of exotic species; releases of toxic substances; possible rapid climate change; and depletion of stratospheric ozone (Daily, 2000).

In recognizing that farmers are key managers of most productive lands on earth (Dale, 2007), this study quantified the impacts of human activity on ecosystems services by focusing on forest loss, soil erosion, and biodiversity. The approach aimed at enhancing the understanding of the dynamics between environment, economic and social dimensions. Integrated Water Resource Management offers an opportunity to take a comprehensive approach to human livelihood security and protection.

According to UNCCD (2012), land degradation is a reduction or loss, in arid, semi-arid and dry sub-humid areas of general biological or economic productivity or complexity of rain-fed and irrigated land under crop, rangeland, pasture, forest, and woodlands. This result from a process or combination of processes, including human habitat and land use, soil erosion caused by the wind and water; degradation of the physical, chemical and biological or economic properties of soil; and long-term loss of natural vegetation.

To understand the dynamics and the cost of soil degradation to enhance planning for ecosystem services management, a holistic approach is required, especially as regards decision-making. Sectoral decision-making is indeed one of the major causes of land degradation when

various economic benefits provided by multifunctional agricultural landscapes and natural ecosystems are not considered (Hein, 2009). Knowledge of the nature of land use, land cover change and configuration across all spatial and temporal scales is a prerequisite for sustainable environmental management and development (Turner et al., 1995).

It is important, therefore, to assess the impact of deforestation on ecosystem services as it will provide information to enhance the planning process. A wide range of social, institutional, and economic factors play a role with regards to the lack of sustainability in the management of natural resources (Lambin et al., 2003).

Hydrology has often been the domain of engineers focusing on river flow phenomena of societal relevance while ecology has been the domain of biologists with a focus on climate/ecosystem dynamics (Falkenmark, 2003). The weak governance associated with water resource development, particularly a single-minded, engineering – economic approach to the ecosystems services, has led to significant social and environmental impacts disproportionately affecting the rural poor that rely on function of water ecosystem (IIED, 2007).

Agriculture is a key driver of the global economy; however, the primary challenge is to simultaneously secure enough high-quality agricultural production, conserve biodiversity and manage natural resources, as well as improve human health and well-being for the rural poor in developing countries (IUCN, 2008). The socio-economic and physical factors which drive soil erosion, therefore, need to be addressed in tandem (Boardman et al., 2003).

Zambia, with a population of about 17 million people, is endowed with a variety of natural resources with a total land area of 752,000 km². The country's forest cover is estimated at 49.9 million hectares or 66% of the total land over of Zambia (GRZ, 2009). The total biomass (that is, above and below ground) is estimated at 5.6 billion tons, with additional 434 million tons of dead wood biomass; for a total biomass estimated at 6 billion tons of this biomass, there are approximately 2.8 billion tons of carbon stored in the forests (GRZ, 2009). About 50% of the domestic honey trade is consumed by rural population, 36% is sold to traders, 8% is sold on the roadside and 6% is traded in urban areas. In 2003, Zambia exported medicinal plants valued at an estimated US\$ 4.4 million (Ng'andwe et al., 2006).

The forestry sector in Zambia contributes about 6.3% to the GDP (Turpie, et al., 2015). The total renewable water resources of Zambia amount to about 105 km³ per year of which 80 km³ are produced internally (World Bank, 2010) Average per capita fish supply has declined from over 11 kg in the 1970s to approximately 6.5 kg in the 2000s (Musumali et al., 2009). According to the GRZ (2011), wildlife resources range from birds and reptiles to mammals. There are about 733 bird species (76 rare or endangered), 150 species of reptiles and 224 species of

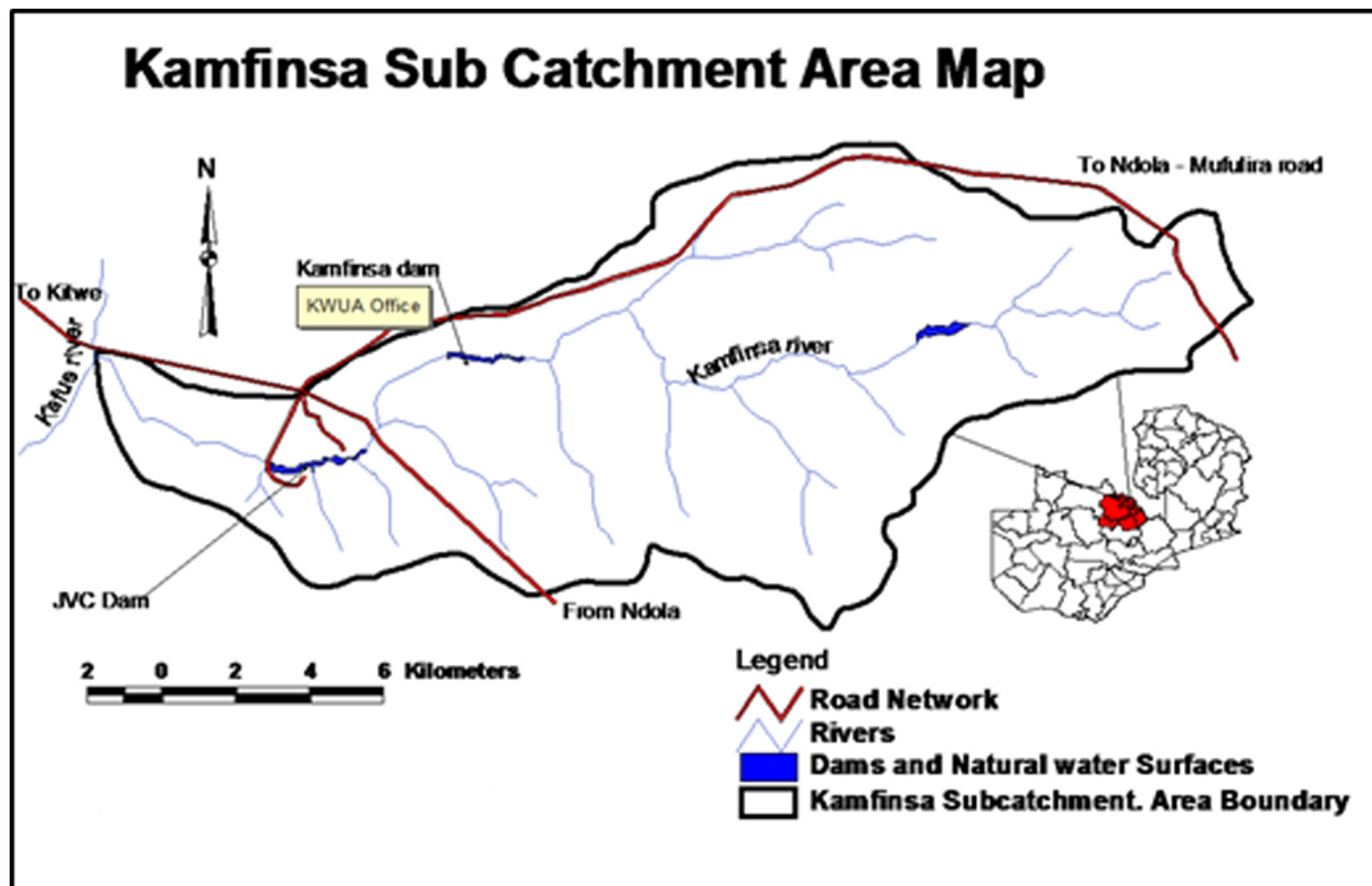


Figure 1. Location of Kamfinsa sub-catchment area.

mammals (16 domesticated). According to the GRZ (2011), the mining sector has been a prime driver of economic development in Zambia for over 70 years, with exports of mineral products contributing about 70% of total foreign exchange earnings.

This study, therefore, aimed at investigating the quantitative impacts of deforestation on ecosystem services to enhance our understanding of the dynamics between social, economic, and environmental issues. An appropriate ecosystem management approach which considers integrated water resource management was applied. The core question the paper aims to answer is whether quantitative analysis of deforestation can enhance ecosystem management and planning?

MATERIALS AND METHODS

Study area

This study site is part of the Kamfinsa sub-catchment of the Kafue River watershed in Kitwe District of the Copperbelt Province of Zambia. It has annual rainfall varying from 1064 to 1302 mm per annum, and experiences three seasons namely: hot dry

(September-November), rainy season (December-March) and the cold, dry season (April-August). The length of the growing season (LGS) is 157 days starting in the first ten days (dekad) of November and ceasing during the third dekad of March, and seasonal mean temperature of 21°C. According to Koeppen Classification, the climate is warm temperate with dry winters and hot summers (Cwa) and falling under dry sub humid with aridity index of 0.64 (Figure 1).

The vegetation of the study site is dominated by Miombo woodland, which characterizes most extensive tropical seasonal woodland and dry forest formations in Africa. Miombo is a vernacular word that has been adopted by ecologists to describe those woodlands dominated by trees of the genera *Brachystegia*, *Julbernardia*, and *Isoberlinia* Leguminosae, subfamily Caesalpinioideae (Campbell, 2007). The miombo region¹ in Africa covers somewhere around 2.4 million km². Above-ground biomass stocking densities of the Miombo vary from 20 m³ ha⁻¹ to as much as 150 m³. Characteristically, miombo is found in areas which receive more than 700 mm mean annual rainfall and where soils tend to be nutrient-poor (Campbell et al., 1996). Miombo woodlands

¹White (1983) puts the figure for the "Zambeian phytocorological region" (of which miombo is the dominant element) at 3.8 million km². Millington et al. (1994), based on remote sensing, suggested the more generally cited 2.7 million km², but it is not exactly clear what they include in their estimate. Frost et al. (2003) suggest 2.4 million km² for the miombo region, of which 466,000 km² has been transformed. The miombo region is a mixture of woodland, degraded woodland and cropland.

cover substantial portions of southern Africa: Angola, Zimbabwe, Zambia, Malawi, Mozambique and Tanzania, and most of the southern part of the Democratic Republic of Congo. It is dominated by a few species, mostly from the genera *Brachystegia*, *Julbernardia* and *Isoberlinia*. Miombo is so-named after the Swahili word for a *Brachystegia* species. In the entire Miombo eco-region, Zambia has the highest diversity of trees and is the centre for endemism for *Brachystegia* tree species (Kalaba et al., 2013).

The Catchment starts from the source of Kamfinsa Stream in Sakania area of Ndola rural district, bordering Democratic Republic of Congo (DRC). Kamfinsa Stream drains the catchment with its five main tributaries, namely Chibwe, Mwambonalimo, Kafibale, Kamishishi and Kamatete streams (Figure 1). Kamfinsa Stream flows into Kafue River at a confluence about 200 m downstream from Kafue Bridge along the Ndola-Kitwe dual carriageway.

Sampling design

Sampling design for the landscape used GIS and remote sensing techniques to conduct land use mapping for the whole sub-catchment area as well as facilitate conducting of forest inventory. This approach allowed for analyzing the proxy variables for an ecosystem to measure the changes due to deforestation. The stratification was done for forest inventory based on vegetation types resulting from land use change. The data included tree diameters and height. Land cover change from the Miombo woodlands was also assessed using GIS and remote sensing.

Land cover change

The sets of data used for analysis were generated using GIS and remote sensing techniques based on Landsat forest cover and digital elevation models (DEM). They were used to estimate the forest cover change, soil erosion, and biodiversity change. The mapping Software tools were Envi 4.7, SAGA GIS and ArcGIS. Land use development over a period of 20 years was assessed from satellite images of the study site acquired for the years 1990, 2000 and 2010. The targeted images for landcover mapping were selected according to the time of year corresponding to the peak of vegetation greenness and, if possible, when cloud cover is low (Forestry Department, 2016). The images used in this study were for the period 1990, 2000, and 2010 corresponding to June and July.

The combination of Landsat's spatial resolution (30 x 30 m pixel size) with ability to detect electromagnetic radiation across the visible, infra-red and thermal wavelengths (Markham and Helder, 2012) has made it possible for the data collected by the sensor of high value to be used for classifying and mapping all manner of biophysical properties and alterations of these properties over time of the earth's surface (Roy et al., 2014). Landsat images consisting of spectral bands covering the study period were used for landcover analysis. The bands were used to create false colour composite images and subsequently used for production of the land-cover maps. The false colour satellite images were geometrically projected to UTM Coordinate System, datum WGS 84, zone 35s.

Considering that vegetation was a key component in the land cover mapping, false colour composite images were generated using 3 bands of Landsat namely, band 4 in near-infrared, band 5 in the mid infrared and band 2 in the visible part of the spectrum. Later, the false colour images were clipped using the Kamfinsa sub catchment area map boundary to generate the thumbnail images for each of the years 1990, 2000 and 2010.

The classification of thumbnail Landsat satellite images covering the sub-catchment area was done using ArcGIS 10 - spatial analyst extension. The classification method adopted was supervised classification using the Maximum Likelihood Classifier by visual

interpretation followed by ground truthing. The land cover maps were digitally generated based on 6 classes of the IPCC (Fernández-Landa et al., 2016). Later, the land cover maps which were in raster format were converted to vector format. Statistics for each land cover class were generated.

Accuracy assessment

The accuracy of the land cover classification from supervised and unsupervised techniques are evaluated and presented as an error or confusion matrix table (Hasmadi, et al., 2009). In this study, to undertake the error assessment, the following steps were done (i) determine the total number of samples to be collected for each category, (ii) design an appropriate sampling scheme, (iii) obtain ground reference information at sample locations, (iv) produce error matrix and (v) evaluate the error matrices, producer accuracy, user accuracy, error of commission and error of omission.

The accuracy assessment was achieved by generating random points on the classified image and by performing Ground-truthing. To get accurate spatial data and classification result, the study also used Google Earth to collect feature type before ground-truthing. The aim of accuracy assessment was to quantitatively assess how effectively the pixels were sampled into the correct land cover classes (Rwanga and Ndambuki, 2017)

In assessing accuracy of the maps generated, a confusion matrix was used for the period under review. The result of the 2010 (Table 4 is correct for accuracy assessment) land cover map returned an overall accuracy of 86%, while 2000 was 81% and that of 1990 was 79%. Generally, all the land cover classes had better overall Kappa coefficient of 0.82.

Estimation of biomass and carbon stock

The study sites were stratified into homogeneous stands, for the purpose of the study, through visual interpretation of the georeferenced satellite imageries, google images of the site as well as the topographic map at a scale of 1: 50,000 and the vegetation map (1: 500,000 scale) for the Copperbelt Province produced by the Forestry Department helped to stratify the areas. Stratification was mainly into two, (i) mature undisturbed forest and (ii) the regrowth forest. The mature intact forest were parts of the forest that had not been severely affected by human activities, e.g., charcoal production, or clearing for agriculture purposes, while the regrowth stand was that, which had been recovering from human disturbances.

The sample plots were divided into three-nest circular sampling plots of 1 m, 10 m, and 20 m radius (Pearson et al., 2005). In total, 60 concentric sample plots of 0.126 ha were measured. The information recorded from each sample plot includes diameter at breast height (dbh) at 1.3 m above-ground surface, tree and shrub species names, and regeneration frequency. Smaller plots were used for regrowth because of the large density and diversity of species which makes the use of larger fixed plots time consuming (Syampungani et al., 2010). Tree volume (Tv) was calculated using the following formula:

$$Tv (m^3) = \pi * \frac{dbh^2}{4} * H * 0.74 \quad (1)$$

where H is tree height, dbh is height at breast height (measured at 1.3 m from the ground) and 0.74 is a form factor.

Based on the Ndola Indigenous Sample Plots, noted that the best indicator of harvestable wood volume in natural forests was the Stand Basal Area (BA) and this was used to estimate the annual biomass annual increment of Miombo woodland. The two approaches for estimating the biomass of woody vegetation types

are the volume method and the direct biomass estimation method. The volume method uses measured volume estimates that are then converted to dry biomass (ton ha^{-1}) using a variety of tools (Forestry, 2016). The direct estimates of the biomass method use biomass allometric equations, as functions relating oven-dry biomass per tree as a function of a single or a combination of tree plant dimensions (Brown, 1997). The study used conversion factors as provided for in the IPCC best practices of 1996, which states that 47% of dry weight of total above-ground biomass is carbon and that below/above-ground ratio is 0.28 for tropical dry forests with above-ground biomass of 20 tons ha^{-1} (Kalaba et al., 2013).

In the case of estimating only annual biomass increase of wood in Miombo, a model by Endean (1967) was applied, which uses the basal area as a predictor variable. The basal area of a forest stand is found by adding the basal areas of all the trees in a field and dividing by the land area in which the trees were measured, and its unit expressed in $\text{m}^2 \text{ ha}^{-1}$.

$$\text{Dry biomass} = 6.234 \times \text{BA} - 15.54 \quad (2)$$

where biomass is above-ground wood mass (ton ha^{-1}), and BA is basal area at breast height. Chidumayo (1990) estimated mean annual increment (MAI) in above-ground wood biomass in regenerating forest as $2.0 \pm 0.24 \text{ tons ha}^{-1}$.

Estimation of soil erosion

Soil erosion is defined as the wearing-off of the land surface by physical forces such as rainfall, flowing water, the wind, ice, temperature change, gravity or other natural or anthropogenic agents. These agents abrade, detach, and remove soil or geological material from one point to be deposited elsewhere (Jones, 2007). Soil erosion is a process that occurs at all timescales; however, the natural rate is significantly increased through anthropogenic activity, and accelerated soil erosion becomes a process of degradation and thus an identifiable threat.

Land cover changes have been used to predict soil erosion which is related to ecosystem services both about water quality and future agricultural yield (Dale, 2007). Besides, soil erosion rates are largely a function of the proportion of bare ground (Dale, 2007). Remote sensing has been used to assess the length, area and density of the gully system (Keay-Bright and Bright, 2006).

In the study, the raster layers corresponding to each of the six Revised Universal Soil Loss Equation (RUSLE) factors were created, stored, and analyzed with the ArcGIS and SAGA. The Soil Map was used to generate the K-factor, the rainfall data was used to generate the R-factor, the Landsat Images were used to generate the NDVI from which the C and P- factors were produced and finally the digital elevation model (DEM) was used to generate the L-factor and S-factor. This combination computed the estimated soil erosion potential for the entire study area. The RUSLE equation is widely used in predicting average annual soil loss based on soil erosion factors (Wischmeier and Smith, 1978; Renard et al., 1997) such as soil characteristics, topography, and land cover management. The RUSLE equation was used to estimate annual soil loss from the study area (Prasannakumar et al., 2012):

$$A = R \times K \times LS \times C \times P \quad (3)$$

where A is the annual average soil loss - [$\text{ton ha}^{-1} \text{ year}^{-1}$], R is the rainfall intensity factor - [$\text{MJ mm ha}^{-1} \text{ h}^{-1} \text{ year}^{-1}$], K is the soil erodibility factor - [$\text{ton h MJ}^{-1} \text{ mm}^{-1}$], LS is the topographical (slope-length) factor - [Dimensionless], C is the land cover factor - [Dimensionless], and P is the soil conservation or prevention practices factor - [Dimensionless].

The study utilized raster GIS environment to generate the

RUSLE factors required to generate the annual soil erosion rates.

On-site cost estimation of soil erosion

In this study, estimation of the on-site costs of soil erosion was achieved by using the replacement cost method and the following were estimated:

- Quantification of the amount of eroded topsoil was obtained through this study using the RUSLE and GIS methodology;
- Quantification of the amount of N, P and K contained in 1 ton of undisturbed natural forest (Miombo) topsoil in the study area based on the unit values from 100 g soil samples reported in a previous study by Frost (1996).
- Quantification of the amount and monetary value of inorganic fertilizers required to replace the lost N, P and K in one ton of eroded topsoil was derived by making use of unit values for soil erosion calculated by using RUSLE and N, P and K content of topsoil.

Estimation of NDVI

In generating canopy cover values, normalized difference vegetation index is computed using near-infrared (NIR) and red band (R), and using the general equation (Ioannis et al., 2009):

$$\text{NDVI} = (\text{NIR} - \text{R}) / (\text{NIR} + \text{R}) \quad (4)$$

Where R and NIR stand for the spectral reflectance measurements acquired in the red (visible) and near-infrared regions, respectively.

For this study, NDVI was generated using image for 1990, 2000 and 2010. The NDVI values lie in the range [-1, +1]; however, Ioannis et al. (2009) indicate that vegetation occurs when NDVI exceeds +0.18. Since the original C-factor of USLE range from zero (full cover) and 1 (bare land) while the NDVI values range in reverse from 1 (full cover) to 0 (bare land), the calculated NDVI values are inverted. The C-factor map was produced using the following exponential equation (Van der Knijff et al., 2000):

$$C = \exp [-\alpha \text{NDVI} / (\beta - \text{NDVI})] \quad (5)$$

Where α , β : parameters determining the shape of the NDVI-C curve. A α -value of 2 and a β -value of 1 seem to give reasonable results (Ioannis et al., 2009). The C-factor has greater uncertainty for the lower range NDVI values due to non-photosynthetic vegetation (NPV) not measured by the NDVI as well as soil reflective properties.

Measuring changes in forest biodiversity

Estimation of land-use impacts on biodiversity, especially at a landscape scale is necessary to ensure systematic conservation planning (Desmet and Cowling, 2004). Vegetation indices can be used to represent environmental change. A broad range of contexts, including forest ecosystem destruction, degradation, and fragmentation (Holm et al., 2003), can be used in correlative studies to identify declines in ecosystem abundances (Carey et al., 2001) or species richness (Bar-Massada et al., 2012). Previously, the NDVI was used to generate maps, including the pioneering mapping of vegetation distribution and productivity in Africa (Tucker, 1985). Since then, there has been a number of studies in Africa, which include that of Martiny et al. (2010) who assessed the predictability of using NDVI in semi-arid African regions as well as the work of Higginbottom and Symeonakis (2014) who used the multi-temporal analysis of vegetation index data to show that NDVI

and other vegetation indices can provide a sophisticated measure of ecosystem health and variation.

A study on spatial variability of species richness of birds in Kenya found a strong positive correlation between species richness and maximum average NDVI (Oindo et al., 2000). Different aspects of vegetation condition derived from vegetation indices such as NDVI contribute to the mapping of environmental variables which provide indications of species composition, abundance and distribution (Duno et al., 2007).

In this study, changes in forest biodiversity were measured by calculating the NDVI for 1990, 2000 and 2010. The NDVI for each time series was then overlaid in order to assess the changes that had occurred over the time period. The overlaid NDVI images using ArcGIS generated an image to assess the change and potential impacts on biodiversity. The image was used to evaluate the change in the vigor of plants by comparing the status in the undisturbed mature forest and the regrowth.

Overall estimation of the value of forests lost through deforestation

The valuation methods used in assessing the cost of deforestation on the ecosystem services were (i) Using the Replacement Cost method to assess the value of soil lost due to deforestation, which is an approach involving estimation of the expense of replacing an ecosystem service with a human-made product, infrastructure, or technology (Noel and Soussan, 2009) (ii) Assessing the value of forests (trees) in deforested areas using the economic value of biomass carbon. Recent forest valuation studies have used social cost of carbon emissions or the market value of carbon to assess the value of forests (Turpie et al., 2015) and (iii) by using NDVI to assess impact on forest biodiversity. These vegetation indices can effectively be used to represent environmental change in a wide range of contexts, including habitat destruction, degradation and fragmentation (Holm et al., 2003) and can be used in correlative studies to identify declines in population abundances (Carey et al., 2001) or species richness (Bar-Massada, et al., 2012). These represent assessment of regulating, provisioning and supporting services, respectively.

RESULTS AND DISCUSSION

Land cover change

The land cover maps for 1990, 2000 and 2010 show that the natural forests ranged between 13,430 ha in 1990 to 7,081 ha in 2000 and only 2,904.7 ha in 2010. A total of 10,523 ha was lost in 20 years giving an average of 576.3 ha per year. On the other hand, agriculture land increased from 2,272 ha in 1990 to 8,333 ha in 2000 and 12,251 ha in 2010 (Figures 2 and 3). The tree plantations established for timber and poles remain the same during this period on 8,035 ha. Deforestation resulted in the loss of 10,525.80 ha (78.4%) of the forested area in Kamfinsa sub-catchment in 20 years. This deforestation is higher than the average rate of deforestation of the country, which was 300,000 ha per annum (0.60%), while the Copperbelt Province average was 0.84% (Forestry Department, 2016). This was a result of the Structural Adjustment Programme under which a lot of mine workers on the Copperbelt province, about 35,000 lost

their jobs between 1991 and 2000 (Simutanyi, 2008). This resulted into unplanned settlement, high production of charcoal and increased land under agriculture as key drivers of deforestation since people had to seek for alternative livelihoods to survive. The primary cause of deforestation in the Kamfinsa sub-catchment area was agricultural activities resulting from new settlements due to job loss from the mines on the Copperbelt (Shitima, 2005).

Deforestation has led to changes of various ecosystem services including increase in soil erosion (Mumeka, 1986). Also, according to Shitima (2005), the forests in Mwekera provided other wood and non-wood forest products like charcoal, while Kalaba and Quinn (2013) indicated that the forests provided building poles, mushrooms, wild fruits, and roots which local communities traded to support their livelihoods. Besides, Kalaba et al. (2013) indicated that the vegetation composition of regrowth sites suggested that pre-disturbance land use affected the vegetation structure during recovery.

Biomass loss

The average biomass stocking density in Kamfinsa sub-catchment area of natural forests was 81 m³ ha⁻¹ (Table 1 and Figure 4). This stocking density was equivalent to 38 tons of Carbon per hectare from above-ground biomass and 11 tons of Carbon per ha of below-ground biomass (based on IPCC suggested below/above-ground ratio which is 0.28 for tropical dry forests with above-ground biomass of 20 tons/ha). The above ground biomass results compare well with those generated by Kalaba et al. (2013) of 39.9 ton per hectare. Assuming a project-based price of Carbon at international market in 2015 of about US\$5 per ton, the cost to the ecosystem of losing a hectare of forest was US\$243.65. This cost, however, does not include other potential use of the forest, e.g., eco-tourism, as well as the actual cost of timber and non-wood forest products on the market. The cost would be much higher than that based on the sale of Carbon. According to Turpie et al. (2015), the world average price of carbon was between US\$4 and US\$8 per tonne. It was projected that carbon prices were to increase in future, possibly to as high as US\$37–US\$114 per tonne by 2050 (Chiabai et al., 2011). According to Turpie et al. (2015), the social cost of carbon was estimated to be US\$29 per tonne and depending on location, Carbon stocks in Zambian forests are potentially worth about US\$150 per ha (hectare) on average (once off) but range up to US\$745 per ha for intact forests.

Soil erosion

The mean values calculated for using the Revised

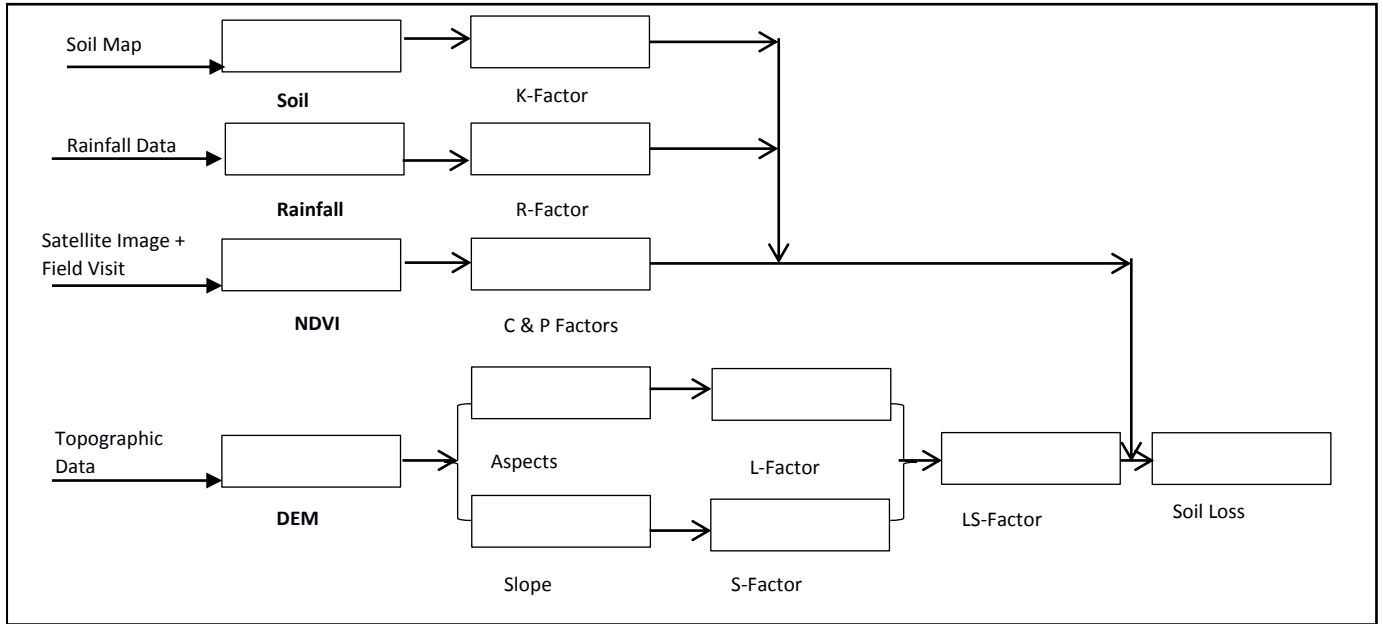


Figure 2. Methodology for Generating the RUSLE model factors.

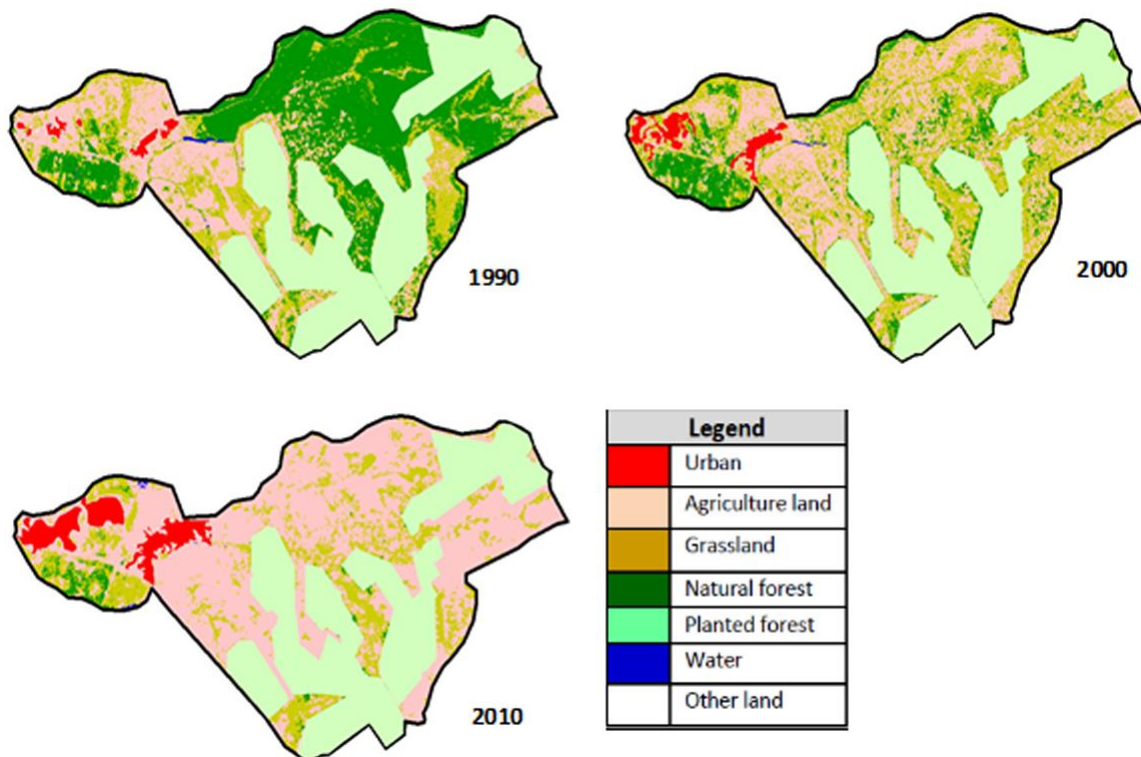


Figure 3. Mapping land use types for 1990, 2000 and 2010.

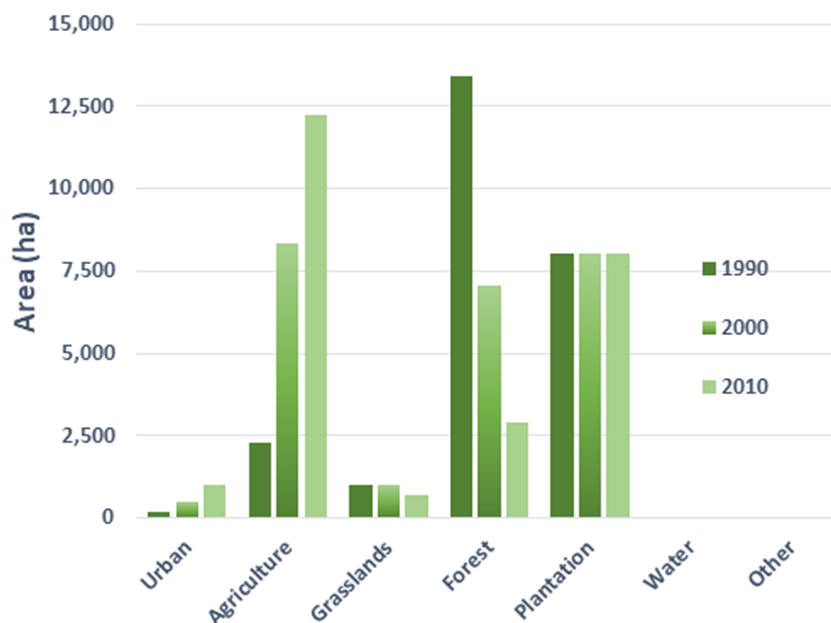
Universal Soil Loss Equation (RUSLE) were as follows; LS, the topographical (slope-length) factor was 0.44-ton h MJ⁻¹ mm⁻¹; K, the soil erodibility factor was 0.01-ton h MJ⁻¹

mm⁻¹; R, the rainfall intensity factor was 542 MJ mm ha⁻¹ h⁻¹ year⁻¹; C, the landcover factor was 0.66, and the support practices assumed and hence given a uniform

Table 1. Cost of deforestation in Kamfinsa sub-catchment.

Mean diameter (cm)	Average volume (m ³ ha ⁻¹)	Carbon stock (AG and BG) (ton ha ⁻¹)	Deforestation rate (ha year ⁻¹)	Price of carbon/ton (US\$ ton ⁻¹)	Total cost (US\$)
16.57±0.21	81.00	48.74	576.29	5.00	243.65

US\$1.00 = ZMK 7.00.

**Figure 4.** Area assessment of the land use types for 1990, 2000 and 2010.

weight of 1. After all the RUSLE factors had been determined using GIS, they were combined in the GIS environment to come up with the soil erosion risk map of the area indicating different levels of soil erosion risk. The resulting map for the study shows soil loss values ranged between 0 and 16.78 ton ha⁻¹ year⁻¹ at the pixel level, with a mean value of 1.59 ton ha⁻¹ year⁻¹ (Table 2) with a standard deviation of 1.37. As observed, the average high annual soil loss occurred in areas with steep slopes and close to the stream banks as they were targets for cultivation. According to Turpie et al. (2015), the estimated average annual soil erosion in the Copperbelt area was 2 ton ha⁻¹.

On-site soil erosion cost

The on-site cost due to nutrient loss from 1 ton of eroded soil is equal to the monetary value of specific inorganic fertilizers needed to replace the N, P and K contained in that ton of eroded soil. The replacement cost of nutrients in one ton of eroded topsoil regarding inorganic fertilizers was found to be Zambian Kwacha (ZMK) 251.75

(US\$35.96) only for N, P, and K and does not include other nutrients and materials naturally found in topsoil. This amount, therefore, underestimates the actual cost of soil loss, including soil nutrient from one ton of eroded topsoil. The study (Table 3) estimated that 1 ton of soil loss cost ZMK 251.75 (US\$35.96). The soil erosion risk assessment observed that 1.59 tons of soil was lost per hectare of land annually, and this meant that the total cost per hectare was at ZMK 400.28 (US\$57.18). However, this may be an underestimation since the loss includes soil structure, soil biodiversity, soil organic matter, other soil matter minerals and organic matter.

According to Quamsah et al. (2000) and Amegashie et al. (2012), while it was useful to know the magnitude of soil nutrient losses, their on-site costs were equally important. The increased area under cultivation from 2,272 ha in 1990 to 12,251 ha in 2010 increased the exposure of the land to soil erosion. Cultivated fields did not show specific conservation practices. The area converted to agriculture was mainly from the natural forests. According to Shawa (2012), Mwekera Dam (within the Kamfinsa sub-catchment area) was affected due to soil erosion resulting in siltation in the stream and

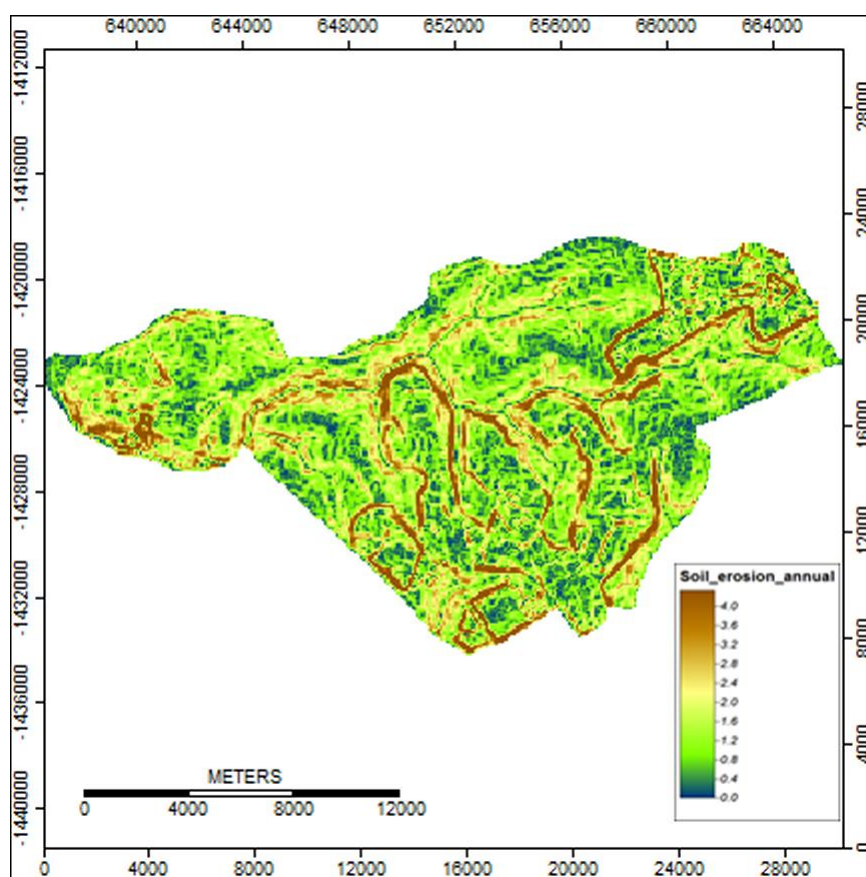
Table 2. Estimates of RUSLE factors (R, K, LS, C and P) for the Kamfinsa sub-catchment area.

A	R	K	LS	C	P
1.59 ton ha ⁻¹	542 MJ mm ha ⁻¹ h ⁻¹ year ⁻¹	0.01	0.44-ton h MJ ⁻¹	0.66	1.0

Table 3. Estimated on-site nutrients loss and rehabilitation costs for the Kamfinsa sub-catchment area.

Quantities and costs	Soil nutrient and inorganic fertilizers (Urea)			
	N	P	K	Total cost
Amount of nutrient in 1 ton of undisturbed top soil (kg)	0.068	0.312	0.016	0.396
Bags of fertilizer containing 1 kg of the nutrient (bags)	0.20	0.10	0.20	0.50
Cost of fertilizer containing 1 kg of the nutrient (ZMK)	50.00	25.00	50.00	125.00
Cost of fertilizer to replace nutrient loss in 1 ton of eroded topsoil (ZMK)	170.00	78.00	3.75	251.75

1US\$=7ZMK.

**Figure 5.** Annual soil loss assessment of the Kamfinsa sub-catchment area.

the dam which is the only water source for the National Aquaculture Research Development Centre (NARDC) and the Zambia Forestry College (ZFC). Shawa (2012) further observed that the dam was shallower due to siltation; hence it affected the water flow and fish production, especially during the dry season.

Change in biodiversity

It has been recognized that there is a relationship between species richness and primary productivity in terrestrial ecosystems (Waide et al., 1999). Net primary productivity (NPP) of forests as well as species richness

Table 4. Accuracy assessment for 2010 land cover map.

2010 Land cover account assessment		Reference data					Row total	User accuracy (%)	Error of commission (%)	
		Forest	Grassland	Cropland	Wetland	Settlements				Other land
Classified Data	Forest	161	9	7	1	0	0	178	90.4	9.6
	Grassland	5	57	5	3	0	0	70	81.4	18.6
	Cropland	6	7	43	0	1	1	58	74.1	25.9
	Wetland	1	1	1	38	0	0	41	92.7	7.3
	Settlements	0	0	1	0	8	0	9	88.9	11
	Other-land	0	0	0	0	0	2	2	100	0
Column total		173	74	57	42	9	3	358		-
Producer accuracy (%)		93.1	77	75.4	90.5	88.9	66.7		Overall accuracy (86.3%)	
Error of omission (%)		7	23	25	11.0	9.5	33			

increase towards the equator and that vascular plant richness correlates with NPP; hence these results are consistent with recent meta-analyses showing that the relationships between productivity and species richness of both plants and animals in natural ecosystems are predominantly positive (Gillman et al., 2014). Vegetation indices can be used to represent an environmental change in a wide range of contexts. This change includes habitat destruction, degradation, and fragmentation (Holm et al., 2003) and can be used in correlative studies to identify declines in population abundances (Carey et al., 2001) or species richness (Bar-Massada et al., 2012). The NDVI for 1990 and 2010 show differences regarding minimum and maximum values. In 1990, the maximum was 0.56, while that of 2010 shows 0.32. It means that the forests in 1990 were denser as compared to the forests in 2010. In fact, as may be noted, the forest in 1990 had 13,431 ha of natural forest which declined to only 2,901 ha in 2010 threatening and reducing the potential existence of different species of fauna and flora. The plantations according to the map remained at 8,035 ha. Areas of continuous

agricultural activities remain persistent non-forests. The water body reduced from 11.50 ha in 1990 to about 6.30 ha in 2010 and further reduced the habitat for water-based fauna and flora.

The NDVI images analyzed for 1990, 2000, 2010 indicated that the maximum vegetation composition was negatively affected and reduced from 0.56 in 1990 to 0.32 in 2010 (Figure 6). Therefore, when there is a reduced NDVI, it generally means primary productivity is affected negatively and hence that the quality of forest reduced over time in terms of biodiversity and habitat. Areas of continuous agricultural activities remain persistent non-forests, and this means that there were no activities related to agroforestry to replace the lost trees. A study on spatial variability of species richness of birds in Kenya found a strong positive correlation between species richness and maximum average NDVI (Oindo et al., 2000). Different aspects of vegetation condition derived from vegetation indices such as NDVI contribute to the mapping of environmental variables which provide indications of species composition, abundance, and distribution (Duno et al., 2007).

According to CBD (2001), in the absence of biodiversity, there would be no ecosystems and no ecosystem functioning. Also, there is evidence that productive complex forest ecosystems are less diverse under the same conditions and more resilient than less productive ones (Ozanne et al., 2003). Highly prone to catastrophes are forests that comprise relatively few species and provide relatively few goods and services. The loss of biodiversity means the loss not only of the habitat of different species found in the area but also the loss of livelihoods of the people living in and around these forests.

Conclusion

The study objective was to investigate the extent and cost of deforestation on ecosystem services. The results demonstrate that Kamfinsa sub-catchment area lost about 572 ha of forests annually between 1990 to 2010 at a cost of US\$244 per hectare and an estimated loss of 1.59 ton per hectare of soil annually at an estimated cost of US\$57 per hectare. There is a need for

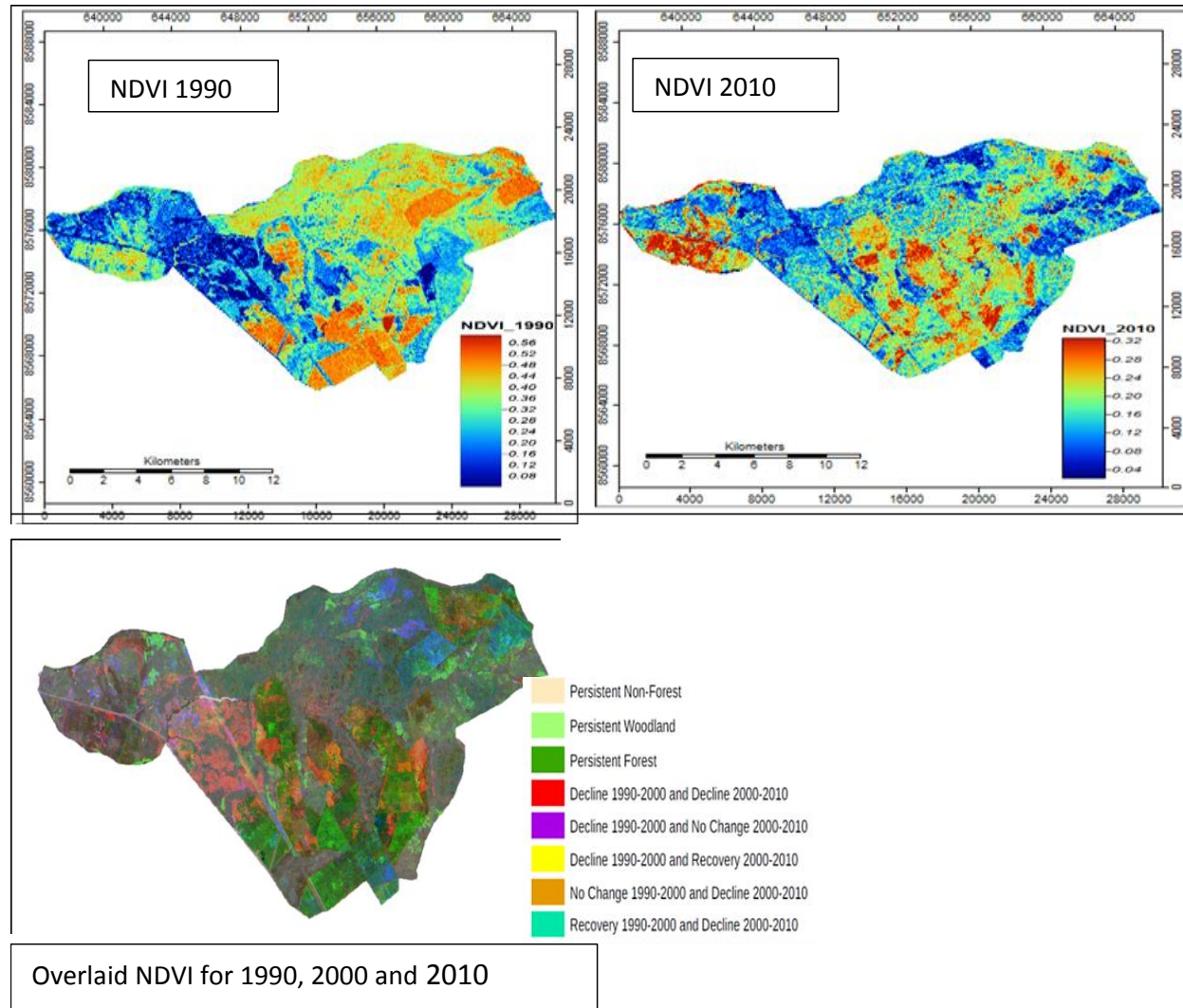


Figure 6. NDVI Assessment of the Kamfinsa Sub-Catchment Area for 1990, 2000 and 2010.

sub-catchment area protection to control erosion and reduce both on-site (fertility and productivity loss) and off-site (sedimentation, pollution) impacts of erosion. From the analysis in the study, there has been negative impacts of deforestation on soil erosion, biomass loss and biological diversity; these losses impacted negatively on the supply of ecosystem services including water supply, wood for woodfuel, and non-wood forest products and hence on the general livelihoods of the people of Kamfinsa sub-catchment area. It is also evident that the monetary estimates underestimate the real costs since there are other benefits derived from the forests. The study has shown that deforestation in Kamfinsa sub-catchment area resulted in costs and therefore there is need to promote an integrated and comprehensive approach to addressing the drivers of deforestation to ensure continued supply of ecosystem services. There is need for developing appropriate agricultural practices and

land use planning at local community level. A study based on empirical data should be undertaken to improve on the existing data on rates of soil erosion.

CONFLICT OF INTERESTS

The authors have not declared any conflict of interests.

ACKNOWLEDGEMENTS

The authors are thankful to Dr. Hamid Reza Pourghasemi (Iran) and Dr. Benjamin Warr for their advice and support on GIS work as well as Mr. Abel Siapale and Mr. Brian Mutasha for practical guidance on the generation of the GIS products. The authors also appreciate the Forestry Department of the Ministry of Lands, Natural Resources,

and Environmental Protection (MLNREP) responsible for the management of forest resources in Zambia for access to forest data.

REFERENCES

- Amegashie C, Quansah A, Agyare W, Bonsu M, Odai SN (2012). On-site effects and cost of fertility erosion from five small reservoir catchments in the Upper East Region of Ghana. *Journal of Science and Technology* 32(2) pp. 78-93.
- Bar-Massada A, Wood E, Pidgeon A, Radeloff V (2012). Complex effects of scale on the relationships of landscapes patterns versus avian species richness and community structure in woodland savannah mosaic. *Ecography* 35:393-411.
- Boardman J, Poesen J, Evans R (2003). Socio-economic factors in soil erosion and conservation. *Environmental Science and Policy* 6: 1-6.
- Brown S (1997). Estimating biomass and biomass change in tropical forests. A primer Rome: FAO.
- Campbell B, Angelsen A, Cunningham A, Katerere Y, Siteo A, Wunder S (2007). Miombo Woodlands-Opportunities and Barriers to Sustainable Forest Management CIFOR Bogor Indonesia.
- Campbell BM, Frost P, Byron N (2006). Miombo Woodlands and their use: overview and key issues. In: Campbell B. (ed.) *The Miombo in Transition: Woodlands and Welfare in Africa*. pp. 1-10. Centre for International Forestry Research Bogor Indonesia.
- Carey C, Heyer WR, Wilkinson J, Alford RA, Arntzen JW, Halliday T, Hungerford L, Lips KR, Middleton EM, Orchard SA, Stanley Rand AS (2001). Amphibian declines and environmental changes: use of remote-sensing data to identify environmental correlates. *Conservation Biology* (15) pp. 903-913.
- Secretariat of the Convention on Biological Diversity (2001). *The Value of Forest Ecosystems*. Montreal SCBD 67p. (CBD Technical Series no. 4).
- Chiabai A, Travisi CM, Markandya A, Ding H, Nunes PALD (2011). Economic Assessment of Forest Ecosystem Services Losses: Cost of Policy Inaction. *Environmental and Resource Economics Issues* 50(3):405-445.
- Chidumayo E (1990). Above-ground woody biomass structure and productivity in a Zambezian woodland. *Forest Ecology Management* (36):33-46.
- Dale VH (2007). Measures of the effect of Agriculture Practices on Ecosystem Services. *Ecological Economics* (64) 286-296.
- Desmet P, and Cowling R 2004. Using species-area relationship to set baseline targets for conservation. *Ecological Science II* 9:11-33.
- Duno D, Coops N, Wulder M (2007). Development of a large area biodiversity monitoring system driven by Remote Sensing. *Progress in Physical Geography III* 31:1-26.
- Endean F (1967). *The productivity of "Miombo" woodland in Zambia Lusaka: Government Printer*.
- Evans R (2005). *Ecosystem Change*. In: *Physical Geography*. London: Digest pp. 199-219.
- Falkenmark M (2003). *Water Management and Ecosystem: Living with Change*. TEC Background Paper No.9. Global Water Partnership Elanders Norum Sweden.
- Forestry Department (2016). Ministry of Lands Natural Resources and Environmental Protection Integrated Land Use Assessment Phase II - Technical Paper 3 Assessment of Existing Models for Biomass Volume Calculations. Lusaka: Food and Agriculture Organisation of United Nations.
- Frost P (1996). The ecology of Miombo woodlands.. In: B. Campbell ed. *The Miombo in transition: Woodland and Welfare in Africa*. Bogor: CIFOR p. 11-55.
- GRZ (2009). *Zambia Integrated Land Use Assessment (ILUA)* Rome: FAO.
- GRZ (2011). *Sixth National Development Plan Lusaka: Ministry of Finance and National Development Planning*.
- Hasmadi HZ, Pakhriazad M, Shahrin F (2009). Evaluating supervised and unsupervised techniques for land cover mapping using remote sensing data. *Malaysian Journal of Society and Space* 5.
- Hein L (2009). The Economic Value of the Pollination Service a Review Across Scales. *The Open Ecology Journal* 2:74-82.
- Higginbottom TP, Symeonakis E (2014). Assessing Land Degradation and Desertification Using Vegetation Index Data: Current Frameworks and Future Directions. *Remote Sensing* 6: 9552-9575.
- Holm A, Cridland S, Roderick M (2003). The use of time-integrated NOAA NDVI data and rainfall to assess landscape degradation in the arid shrubland of Western Australia. *Remote Sensing of Environment* 85:145-158.
- IIED (2007). *Water ecosystem services and poverty* London: IIED. <http://pubs.iied.org/pdfs/G00398.pdf>
- Ioannis ZG, Kostas D, Chara M, George NS, Christos GK (2009). Multi-temporal soil erosion risk assessment in Chalkidi using a modified USLE raster model Chalkidi: Earsele
- IUCN (2008). *Agriculture Ecosystems Facts and Trends* Geneva: Atal Roto Press.
- Jones B (2007). *Common criteria for risk Area identification in the soil framework directive*. Hannover National Soil Resources Institute Cranfield University. UK.
- Kalaba FK, Quinn CH (2013). Contribution of forest provisioning ecosystem services to rural livelihoods in the Miombo woodlands of Zambia. *Population and Environment Issue* 35:159-182.
- Kalaba F, Quinn CH, Dougill AJ, Vinya R (2013). Floristic composition species diversity and carbon storage in charcoal and agriculture fallows and management implications in Miombo woodlands of Zambia. *Forest Ecology and Management* 304:99-109.
- Keay-Bright J, Bright J (2006). Changes in the distribution of degraded land cover time in Central Karoo. *Catena* 67:1-4.
- Lambin EF, Turner BL, Geist HJ, Agbola SJ, Angelsen A, Bruce JW, Coomes OT, Dirzo R, Fischer G, Folke C (2003). The causes of land-use and land-cover change: moving beyond the myths. *Global environmental change* 11(4):261-269.
- Markham BL, Helder DL (2010). Forty-year calibrated record of earth-reflected radiance from Landsat: A review. *Remote Sensing of Environment*. doi:10.1016/j.rse.2011.06.026. <http://digitalcommons.unl.edu/cgi/viewcontent.cgi?article=1069&context=nasapub>
- Martiny N, Philippon N, Richard Y, Camberlin P, Reason C (2010). Predictability of NDVI in semi-arid African regions. *100(3):467-484*
- Mumeka A (1986). Effect of deforestation and subsistence agriculture on runoff of the Kafue River headwaters Zambia. *Hydrological Sciences Journal* 4(31):543-554.
- Musumali M, Heck S, Husken SM, Wishart M (2009). *Fisheries in Zambia: An undervalued contributor to Poverty Reduction Lusaka: The WorldFish Center*.
- Ng'andwe P, Muimba-Kankolongo A, Mwitwa JP, Banda MK, Shakacite O (2006). *Forest revenue Concession systems and the Contribution of the forestry sector to poverty reduction and Zambia's national economy Lusaka: GRZ*.
- Noel S, Soussan J (2009). Economics of land degradation: supporting evidence-based decision-making towards a comprehensive methodological approach for assessing the costs of land degradation and the value of sustainable land management at national and global level. *Synthesis of iss Bonn: Global Mechanism of the UNCCD*.
- Oindo BO, de By RA, Skidmore AK (2000). Interannually variability of NDVI and bird species diversity in Kenya. *International Journal of Applied Earth Observation and Geoinformation* 2(3):172-180.
- Ozanne CMP, Anhuf D, Boulter SL, Keller M, Kitching RL, Körner C, Meinzer FC, Mitchell AW, Nakashizuka T, Dias PS, Stork NE (2003). Biodiversity meets the atmosphere: a global view of forest canopies. *Science* 301(5630):183-186.
- Pearce D, Pearce CGT (2001). *The Value of Forest Ecosystem Services* Montreal: CBD.
- Pearson T, Walker S, Brown S (2005). *Sourcebook for Land Use Land Use Change and Forestry Projects* Arlington: Winrock International.
- Prasannakumar V, Vijith H, Abinod S, Geetha N (2012). Estimation of soil erosion risk within a small mountainous sub-watershed in Kerala India using Revised Universal Soil Loss Equation (RUSLE) and geoinformation technology. *Geoscience Frontiers* 3 (2):209-215.
- Quansah C, Safo EY, Ampontuah E, Amankwah AS (2000). Soil fertility erosion and the associated cost of NPK removed under different soil and residue management in Ghana. *Ghana Journal of Agriculture Science Issue* 33:33-42.
- Renard K, Ferreira V (1997). *RUSLE Model description and database*

- sensitivity. *Journal of Environmental Quality* 3(22):458-466.
- Roy DP, Wulder MA, Loveland TR, Woodcock CE, Allen RG, Anderson MC, Helder D, Irons JR, Johnson DM, Kennedy R, Scambos TA, Schaaf CB, Schott JR, Sheng Y, Vermote EF, Belward AS, Bindaschadler R, Cohen WB, Gao F, Hipple JD, Hostert P, Huntington J, Justice CO, Kilic A, Kovalsky V, Lee ZP, Lyburner L, Masek JG, McCorkel J, Shuai Y, Trezza R, Vogelmann J, Wynne RH, Zhu Z (2014). Landsat-8: Science and product vision for terrestrial global change research. *Papers in Natural Resources*. Paper 459. *Remote Sensing of Environment* 145:154-172.
- Renard KG, Foster Weesies GA, McCool DK, Yoder DC (1997). A Guide to Conservation Planning with the Revised Universal Soil Loss Equation (RUSLE). *Agriculture Handbook vol. 703 US Department of Agriculture Washington DC*. pp. 1-251.
- Rwanga SS, Ndambuki J (2017). Accuracy Assessment of Land Use/Land Cover Classification Using Remote Sensing and GIS. *International Journal of Geosciences* 8:611-622.
- Simutanyi N (2008) Copper mining in Zambia: The developmental legacy of privatization. Paper 165. Institute for Security Studies. Pretoria South Africa.
- Shawa P (2012). Deforestation in Mwekera National Forest No.6: An Ethical Evaluation. A dissertation, Lusaka: University of Zambia.
- Shitima M (2005). Forest Conservation and People's Livelihoods: Explaining Encroachment on Zambia's Protected Forest Landscapes: The case of Mwekera National Forest Kitwe, Copperbelt. Thesis submitted in partial fulfillment of Master of Philosophy in Development Studies, Trondheim: Norwegian University of Science and Technology (NTNU).
- Syampungani S, Geldenhuys C, Chirwa P (2010). The use of species-stem curves in sampling the development of the Zambian Miombo woodland species in charcoal production and slash-and-burn regrowth stands. *Southern Forests* (72):83-89.
- Tucker C (1985). Africa land-cover classification using satellite data. *Science* 225:369-375.
- Turner II BL, Skole D, Sanderson S, Fischer G, Fresco L, Leemans R (1995). Land Use and Land-Cover Change: Science/Research Plan, IGBP Report #35/HDP Report #7, International Geosphere-Biosphere Program, Stockholm.
- Turpie J, Warr B, Ingram J (2015). Benefits of Forest Ecosystem in Zambia and the Role of REDD+ in a Green Economy Transformation, Nairobi: UNEP.
- United Nations Convention to Combat Desertification (UNCCD) (2012). Zero Net Land Degradation - Sustainable Development Goal for RIO + 20: UNCCD Policy Brief, Bonn: United Nations Convention to Combat Desertification.
- Van der Knijff J, Jones R, Montanarella L (2000). Soil erosion risk assessment in Europe. European Soil Bureau.
- Waide RB, Willig MR, Steiner CF, Mittelbach G, Gough L, Dodson SI., Juday GP, Parmenter R (1999). The relationship between productivity and species richness. *Annual Review of Ecology and Systematics* 30(1):257-300.
- Wischmeier W, Smith D (1978). Predicting Rainfall losses: A guide for selecting conservation planning. In: W. Wischmeier, ed. *Agriculture Handbook*. Washington DC: US Department of Agriculture P 69.
- World Bank (2010). Managing Water for Sustainable Growth and Poverty Reduction, Awshngton DC: World Bank.

Full Length Research Paper

Spatio-temporal variations in water and sediment parameters of Abule Agege, Abule Eledu, Ogbe, creeks adjoining Lagos Lagoon, Nigeria

Onyena A. P.^{1*} and Okoro C. A.²

¹Department of Marine Environment and Pollution Control, Faculty of Marine Environmental Management, Nigeria Maritime University, Okerenkoko, Delta State, Nigeria.

²Department of Marine Sciences, Faculty of Science, University of Lagos, Lagos, Nigeria.

Received 18 February, 2019; Accepted 6 May, 2019

Lagos lagoon is known to be highly contaminated due to the increase in human population, industries and influx of contaminants from adjoining creeks. The degree of this contamination can be affected by the seasonal variations in time and space. The spatio-temporal variations in the hydrochemistry and sediments parameters of three (3) Lagos lagoon's creeks were investigated for six months (June, 2016 to November, 2016). Sub-surface water and sediments were collected with a 1 dm³ water sampler and Van-veen grab, respectively and analyzed. Water temperature, pH, dissolved oxygen and conductivity of the water samples and pH, nutrients (nitrate and phosphate), total organic matter (TOM) and total organic content (TOC), alkalinity, acidity and particle size of the sediment samples were analyzed. The physico-chemical parameters in the water and sediment from the sampled creeks showed none significant differences ($P>0.05$). The study showed an increasing level of parameters' rates analyzed, indicating increased contaminants in Abule Eledu and Ogbe creeks. Water temperature maintained a relatively uniform temperature with dissolved oxygen values range of 1.6 to 3.1 mg/L. Conductivity was higher in June to August while high prevalence of nutrients was observed in October and November. Abule Agege and Abule Eledu recorded TOM and TOC that were above 15 mg/kg in June to August while alkalinity and acidity were high in October (6.63 mg/kg) and November (7.72 mg/kg) in the study creeks. The sediment particles size of the creeks ranged from clay, muddy and sandy substratum signifying that they were macrobenthic specific. The increase of the parameters' concentration indicates that the three creeks are highly impacted by anthropogenic stressors, dependent on the source of pollution occurring at the sites as well as controlled by seasonal variations. Continuous monitoring is required to be done to prevent future heavy metal pollution and total degradation in the water's quality of the Lagos lagoon's creeks.

Key words: Physico-chemical characteristics, sediments, creeks pollution, seasonal variation, Lagos lagoon.

INTRODUCTION

Nigerian aquatic systems are subjected to pollution pressures associated with urbanization and population growth (Edokpayi et al., 2000; Nkwoji et al., 2010). The effort to transform Lagos into a mega city has led to its

rapid urbanization, high influx of humans and likewise volumes of wastes generated (Nkwoji et al., 2010) and have been seen as a threat to the aquatic systems. The pollution status of aquatic systems is generally

attributed to the direct discharge of waste (domestic and industrial) and the contribution from rivers, creeks and drainage canals that empty into larger waters like Lagoon at different points. Abule Agege, Abule Eledu, and Ogbe creeks are in South-western Nigeria and they empty into the Lagos lagoon. Over the years, the water bodies are the primary dump resources for disposal of waste, especially effluents from domestics and industries. These effluents from industries have an unlimited toxic influence on the pollution of the water body, as they can alter the physical, chemical and biological nature of the receiving water body (Sangodoyin, 1991; Adekunle and Eniola, 2008). Creeks provide most important aquatic links between storm water run-offs from land and saline estuaries and lagoons. They may originate as storm water channels or creeklets drain into coastal rivers or directly into estuaries or lagoons (Nwankwo et al., 2003).

Important macro-nutrients such as nitrogen and phosphorus are continuously being interchanged between sediment and overlying water (Abowei and Sikoki, 2005). Water and sediments play significant roles in the aquatic ecosystem and the biosphere. They serve as food and habitat to many marine organisms (such as benthic macro invertebrate), some of which support viable fisheries and whose metabolic activities contribute to aquatic productivity (Edokpayi and Nkwoji, 2007; Holme, 2001). It is also the major site for organic matter decomposition which is largely carried out by bacteria. Nevertheless, sediment serves as reservoir for pollutants and therefore a potential source of pollutants to water column, organisms and ultimately human consumers of those organisms. Contaminated sediment can cause lethal and sub-lethal effect in benthic and other sediment associated organisms (Edokpayi and Nkwoji, 2007). Oschwald (1997) stated that sediment input impacts stream communities through a variety of direct and indirect processes which includes reduced light penetration, smothering, habitat reduction, and introduction of absorbed pollutant (pesticides, metals, nutrients). Also, McLusky and Elliott (1997) stated that the physico-chemical parameters of the sediment such as dissolved oxygen, pH and organic carbon can also influence the occurrence and abundance of species distributed in them.

The presence of contaminants decrease the quality and uses to which water and sediments may be deployed as well as serve as a major factor controlling the state of health in both cultured and wild fishes and other aquatic organisms (Macer, 2000). The resultant effect includes the adverse biological consequences on the coastal aquatic environment, the general health of aquatic life, the maintenance of a hitherto viable artisanal commercial

fisheries and the safety of humans occupationally exposed to the pollution (Nkwoji et al., 2010).

Lagos lagoon system experiences two seasonal trends, the dry season (November-April) and the wet season (May-October). Hence, the creeks adjoining the Lagos lagoon is prone to have environmental gradients all through the year. The aim of this research is to evaluate the spatio-temporal variation and the impacts of anthropogenic activities on the sediment and water of creeks around Lagos Lagoon, Nigeria.

Description of study sites

Abule Agege creek (Station A) with coordinates 3°24.024'E and 6°30.864'N is situated on the north-eastern side of the University of Lagos between the Faculty of Engineering and Science. The region is a brackish water creek and is typically shallow, tidal and sheltered (Emmanuel and Onyema, 2007). A study by Nwankwo (1996) stated that the creek is subjected to tidal fluctuations of Lagos Lagoon. Abule Eledu (Station B) which is located about 500 m from Abule Agege is an isolated freshwater swamp that is part of a creeklet, which empties into Lagos Lagoon. The station has a coordinate of 3°23.914'E and 6°31.413'N. The width of the creek is about 20 m and an average depth of about 0.5 m. Ogbe creek (Station C) is located about 1 km from Abule Agege on a swampy creek, which flows south-west through the Lagos metropolis and University of Lagos before emptying into the lagoon. Ogbe creek is non tidal and experience flooding in the wet season as a result of surface runoff (Nwankwo and Akinsoji, 1992). The stream channel width is about 30 m with an average flow velocity of 0.5 cmS⁻¹ (Edokpayi and Ayorinde, 2009). The station has a coordinate of 3°23.527'E and 6°30.627'N.

MATERIALS AND METHODS

Collection of samples

The study adopted both field and laboratory based procedures to generate the data required. Surface water for physical, chemical and sediments analysis was collected monthly at three sampling stations from the period of June to November, 2016 between 08:00 am and 11:00 pm.

Sub-surface water samples were collected with a 1 dm³ water sampler, stored in 1-L water bottles and analyzed in the laboratory for pH and conductivity using a multi-meter water checker (Horiba U-10). Surface water temperature was measured *in situ* using mercury-in-glass thermometers. Separate water samples were collected in 250-ml dissolved oxygen bottles at each station for dissolved oxygen and estimated using iodometric Winkler's method.

*Corresponding author. E-mail: amarachionyena@gmail.com.

Author(s) agree that this article remain permanently open access under the terms of the [Creative Commons Attribution License 4.0 International License](https://creativecommons.org/licenses/by/4.0/)

Sediment samples were collected using a Van-veen grab (wt. 25 kg; ht. 20 cm). The grab affixed with a rope was lowered gently into the water until it got to the bottom of the water. It was then hauled and the contents emptied into a bowl. A portion of the sediment sample was collected and kept into a nylon bag that was appropriately labeled with dates and stored in a deep freezer prior to sediment analysis in the laboratory (Nkwoji et al., 2011).

Sediment sample analysis

Two grammes of the sediment were weighed in a beaker into 20 ml of distilled water and allowed to stand for 30 min. Another 30 ml of distilled water was added to the sample and made to 50-ml final volume. 20 ml was removed for acidity and alkalinity while the remaining 30 ml was digested with 5 ml HNO₃ on hot plate heated for 30 min in a fume cupboard. The digest was diluted with 80 ml distilled water and was filtered with No. 1 filter paper (IAEA, 2003).

Particle size analysis

Determination of the particle size was by wet screening method (IAEA, 2003). An accurately weighed 25 g of sample of oven-dried sediment from each station was pre-heated with distilled water containing a sequestering agent (Sodium hexameters phosphate) for two days until all lumps were broken. The sample was sieved through a 63- μ m sieve to separate the sediment into sand, silt and clay fractions. The retained material on the sieve was dried to a constant weight at 80°C and agitated on a mechanical shaker for 15 min. Any remaining silt/clay fraction passed through the sieve. The percentage of silt-clay fraction was calculated by subtracting the weight of the fraction retained on the sieve after shaking from the initial weight of the oven-dried sediment sample (IAEA, 2003).

Statistical analysis

Data analysis of the physical and chemical parameters of water and sediments were statistically analyzed for their mean and variance using the Statistical Package for Social Science (SPSS) and was tested at a level ($p > 0.05$) for significance. The mean values of each parameters were compared among the three study creeks using bar chart and analysis of variance (ANOVA).

RESULTS

Data on the water and sediment characteristics of the sample sites are presented in Tables 1 and 2, respectively. The physico-chemical parameters in the water and sediment showed that there was no significant differences ($P > 0.05$) among the study stations.

Water analysis

The graph of the seasonal variation in the physicochemical parameters is illustrated in Figure 1. The water pH concentrations ranged between 6.5 - 7.20 with slight changes across the months. Recorded values for water temperature varied by 1°C with maximum value of 26°C and minimum of 25°C. Conductivity of the sample sites was ≥ 0.44 mS/cm. Abule Agege (7.67 mS/cm) and

Abule Eledu (8.18 mS/cm) creeks recorded conductivity to be highest in June but reduced exponentially to 0.5 and 0.44 mS/cm in November, respectively. Conductivity in Ogbe creek declined in August and September and increased in October and November. The dissolved oxygen concentrations in water were above 1.6 mg/l all through the sample months and sites. There was a rise and fall in DO from June – November. In Abule Agege Creek, the DO increased exponentially from 1.7, 2.0, 2.4, 3.0 mg/L in June to September but dropped in October (2.4 mg/L) and increased again in November (3.0 mg/L). In contrast, Abule Eledu recorded dissolved oxygen of 1.6 mg/L in June but rose to 2.5 mg/L in July. However, DO was dropped in August to 2.1 mg/l. September recorded highest DO concentrations of 3.8 mg/L but dropped in October to 1.8 mg/l and increased again to 2.4 mg/L in November. Also, dissolved oxygen in Ogbe Creek increased exponentially from June to August, declined but maintained a constant value of 1.6 mg/l in September and October and rose to 2.0 mg/L in November.

Sediment characteristics

The seasonal variations of sediment characteristics are shown in Figures 2 to 6. Abule Agege Creek recorded sediment pH concentrations ≥ 6.0 in June to November. However, all the sample months were alkaline (≤ 6.4) except in October (6.63) and November (7.2). October and November recorded highest values of acidity and alkalinity. Nitrate concentrations were low in September (17.2 mg/kg) but ≥ 25.2 mg/kg in other months. Phosphate concentrations from June to August recorded ≤ 1 and ≥ 15.1 mg/kg in September to November. Total organic matter and total organic carbon were low in September and October but high in the other months.

On the other hand, Abule Eledu Creek had pH values that were slightly neutral in the sample months except in October that recorded pH of 6.4. October and November also recorded highest values of acidity and alkalinity like the one observed in Abule Agege Creek. Nitrate concentrations were high in August (25.2 mg/kg) but dropped to 19.8 mg/kg in September and increased in October (41 mg/kg). Phosphorus concentration were highest in October (14.4 mg/kg) and November (18.9 mg/kg) but was ≤ 3.3 mg/kg in the other months. TOC was $\leq 3.89 \geq 10.8\%$ while TOM was $\leq 6.80 \geq 18.6\%$. TOC and TOM were highest in August and lowest in October.

Consequently, pH of sediment from Ogbe Creek showed slight neutral conditions $\leq 6.8 \geq 7.18$ in the months except in September and October that had 6.5 and 6.4 respectively. Just like the other sample stations, October and November recorded highest values of acidity and alkalinity. The creek recorded increasing levels of nitrates across the months with highest in October (38.2 mg/kg) and November (43.8 mg/kg). Phosphorus concentrations

Table 1. Monthly variation in physicochemical paraments of water at the sample sites.

Parameter	June			July			August			September			October			November		
	A	B	C	A	B	C	A	B	C	A	B	C	A	B	C	A	B	C
pH at 25°C	6.7	6.9	7.2	6.8	6.6	7	6.7	6.8	6.9	6.8	6.7	6.5	7.2	7.1	6.8	6.6	6.6	6.9
Water temperature	26	26	25	25	25.2	26	25	25	25	25	25	25	25	26	26	26	26	26
Conductivity (ms/cm)	7.67	8.18	0.85	5.22	3.15	0.91	2.71	1.18	0.8	0.6	0.48	0.6	0.55	0.44	0.86	0.5	0.44	0.99
DO (mg/L)	1.7	1.6	2.3	2.0	2.5	3.1	2.4	2.1	3.0	3.0	3.8	1.6	2.4	1.8	1.6	3.0	2.4	2.0

Table 2. Monthly variation in the sediment characteristics at the sample sites.

Parameter	June			July			August			September			October			November			
	A	B	C	A	B	C	A	B	C	A	B	C	A	B	C	A	B	C	
pH (1:1Sediment)	6.43	6.88	7.18	6.4	6.6	7	6.7	6.4	7.1	6.63	6.8	6.5	6.0	6.4	6.5	7.2	7.1	6.8	
Alkalinity (mg/kg)	81	82	60.5	80	85	50	82	79	71	90	83	79	1380	1410	1500	120	1370	1190	
Acidity(mg/kg)	110	106.5	73	112	105	70	110	108	66	135	132	117	230	180	210	1350	140	200	
Nitrate(mg/kg)	24.5	16.1	13.75	23	16.5	13.5	25.2	15.7	14	17.2	19.8	15	64.7	41	38.2	50.6	39.1	43.8	
Phosphate(mg/kg)	0.53	1.23	0.91	0.2	0.9	0.7	0.85	1.55	1.12	15.1	3.3	5.7	32.7	14.4	20.7	16.3	18.9	10.7	
TOC (%)	11	9.45	6	11.1	10.4	6.2	10.8	8.5	5.8	3.47	6.79	4.25	5.21	3.89	4.03	6.04	5.93	3.12	
TOM (%)	18.85	16.25	10.3	19.1	17.9	10.7	18.6	14.6	9.9	5.97	11.68	7.31	8.96	6.80	6.93	10.39	10.20	5.37	
Particle size(%)	Clay	58	58	58	50	52	40	47.2	57.5	53.5	65	32	44	59	36.9	42.9	38.1	33.2	18.7
	Silt	35	36	34	41	45	55	44.2	38.8	42.1	45.7	42	30	39.8	60.1	55.0	59.3	64.9	42.9
	Sand	7	6	8	9	3	5	8.6	3.7	4.4	7.1	3.5	2.6	1.2	3.0	2.1	2.6	1.9	8.4

A= Abule Agege creek, B = Abule Eledu creek, C= Ogbe creek.

in June to August was <1.2 mg/kg but higher from September to November and highest in October with values of 20.7 mg/kg. In contrast to other sample stations, June to August recorded the highest values in TOC (>5 mg/kg) and TOM (>9 mg/kg) whereas November recorded the least concentrations of TOC and TOM.

The following sediment particle size were observed in the sample stations. Abule Agege Creek had a clay-muddy substratum; Abule Eledu Creek had a muddy substratum while Ogbe Creek is a sandy substratum. The sediment particle size

in the sediment from the sample locations showed that there was no significant differences (P>0.05).

DISCUSSION

The majority of the water chemistry and sediment characteristics studied can be assigned to influences from early dry season and peak rainy season. Irrespective of the season, results of the present study recorded relatively uniform water temperatures that correlate with the studies of

Nkwoji et al. (2010, 2011) which was attributed to the conventional nature of the parameters in the creeks. The low water temperatures across the months and sample stations was due to the effect of low insulation, increase in suspended particles and the dilution effects of flood waters. The slight variation in the values of water temperature (25-26°C) may be linked with the shallowness of the creeks and regular tidal motions, which ensured the complete mixing of the water. This observation agrees with Ajao (1990). The increasing values of conductivity in Ogbe Creek depict it as a fresh

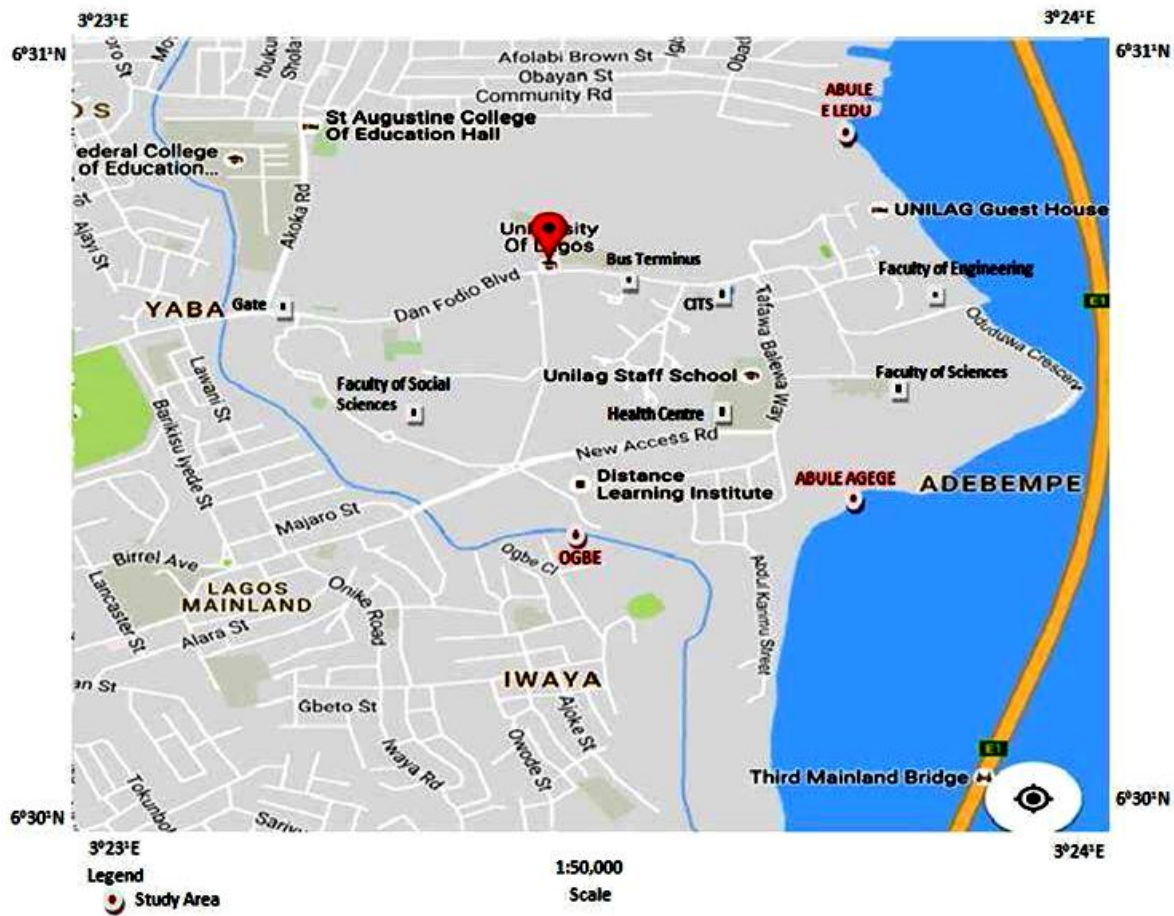


Figure 1. Map showing the sampling stations.

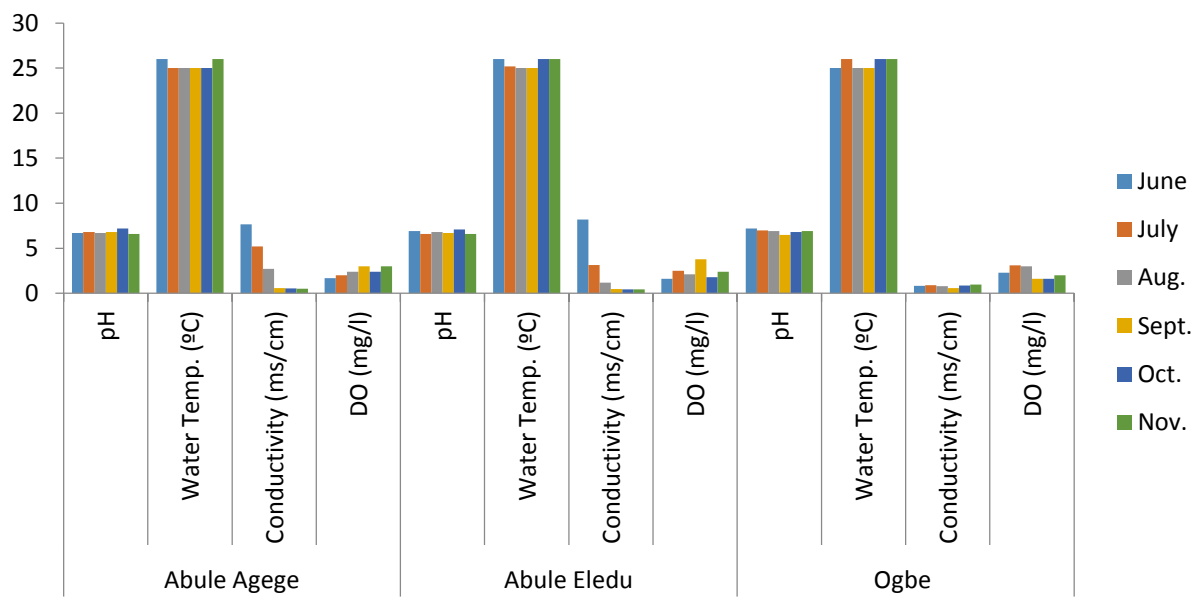


Figure 2. Seasonal variation of the physicochemical parameters in water at Abule Agege Creek, Abule Eledu Creek and Ogbe Creek.

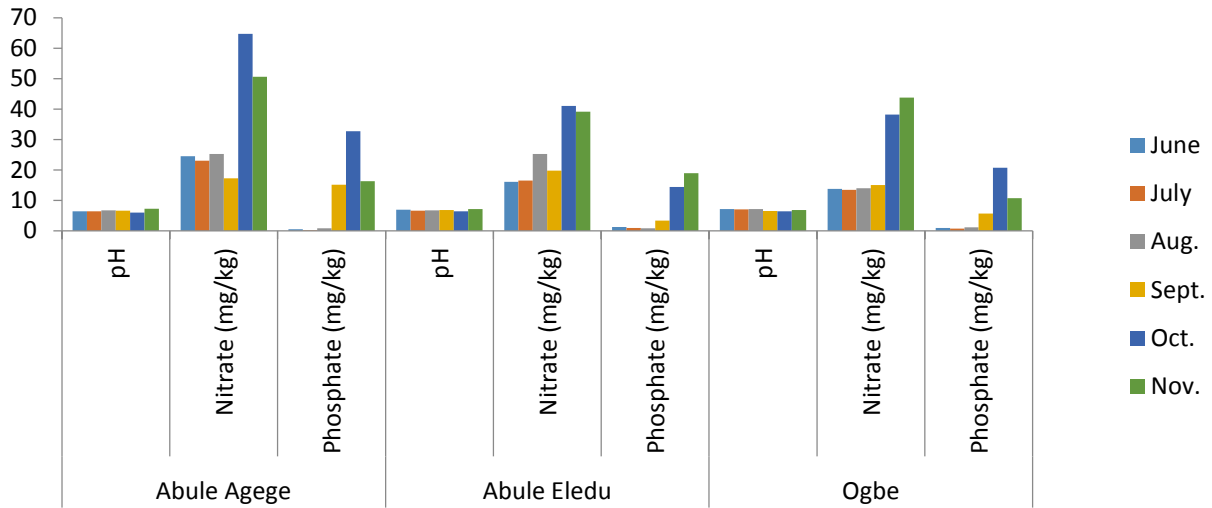


Figure 3. Seasonal variation of pH, Nitrates, and Phosphates in Sediments from Abule Agege Creek, Abule Eledu Creek and Ogbe Creek.

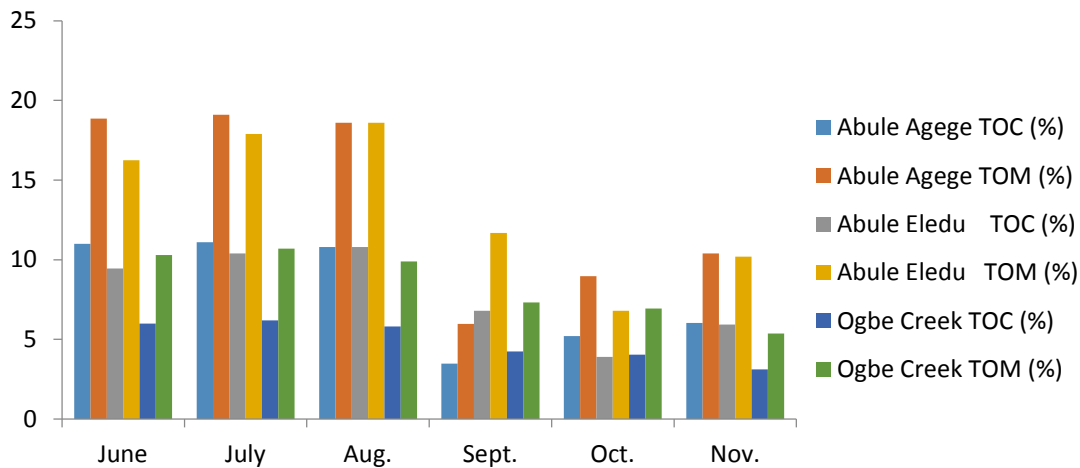


Figure 4. Seasonal variation of TOC and TOM in Sediments from Abule Agege Creek, Abule Eledu Creek and Ogbe Creek.

water ecosystem.

Optimal pH range for sustainable aquatic life is pH 6.5 - 8.2 (Murdock et al., 2001). Most aquatic organisms are known to be affected by pH due to their metabolic activities that are pH dependent (Wang et al., 2002). The pH value recorded across the months was slightly acidic to neutral ($pH \geq 6.5 \leq 7.2$). The results indicated slightly acidic pH levels in Ogbe Creek during the rainy season and could be attributed to the mechanic workshops located close to creek. The observed acidity pH in this study agrees with the reports of Abowei and Sikoki (2005) that water with little change in pH are generally more conducive to aquatic life.

Dissolved oxygen (DO) values range of 1.6 mg/kg - 3.1 mg/L was recorded during the period of study. This was

however lower than the W.H.O standard of 5 mg/L. This low dissolved oxygen was attributed to be as a result of the discharge of organic wastes and nutrient inputs from sewages and agricultural run-off that find its way into the water body through erosion (Olowu et al., 2010). The low level and decline of dissolved oxygen in the study stations depicted a high level of organic pollution which resulted to biodegradations by biotic microorganism (Nkwoji et al., 2010). Seasonal variations observed in DO concentrations with higher values in rainy season could be due to increased aeration because of rainfall (Adeyemo et al., 2008). Ayoade et al. (2006) reported that DO concentration at Asejire Lake reached its peak at the height of rainy season. Even though the studied creeks recorded low DO concentration; the lower DO in

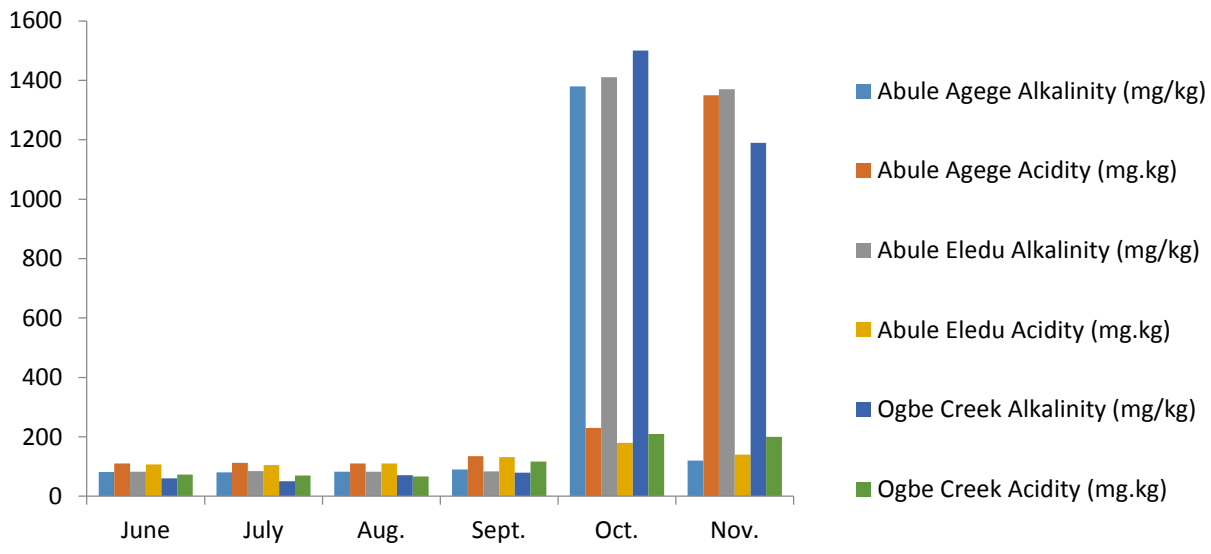


Figure 5. Seasonal variation of alkalinity and acidity in sediments from Abule Agege Creek, Abule Eledu Creek and Ogbe Creek.

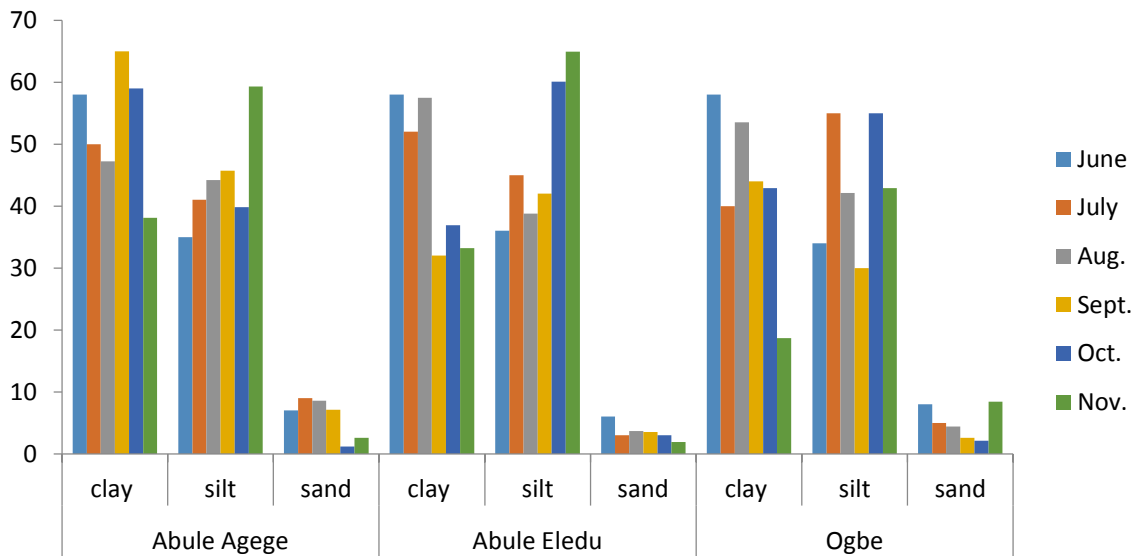


Figure 6. Seasonal variation in the particle size of sediments from Abule Agege Creek, Abule Eledu Creek and Ogbe Creek.

Ogbe Creek specifically implied that the creek was more polluted than Abule Agege and Abule Eledu Creeks. Domestic, agricultural, effluent and waste discharge into creeks are usual practice in Lagos and are the main reasons for the high pollution of the creeks.

The influx of contaminants coming from domestic and industrial effluents, urban storm, and agricultural run-offs into the study locations led to the changes in the environmental conditions of the creeks thereby resulting in the increase in alkalinity, acidity, nutrients, TOC, TOM,

and pH of the sediment characteristics. This correlated with the works of Ajao and Fagade (1990) that also recorded changes in the ecological biota and sediment characteristics which were as a result of these stressors.

The sample sites had high concentrations of nitrates higher than 20 mg/kg. The study locations showed limited concentrations of phosphates as compared with that of nitrates. The increase in nutrients of the study sites can be attributed to the increase in anthropogenic activities (Edokpayi and Ayorinde, 2009; Edokpayi et al., 2010).

Excess nitrate in sediment is considered as pollutant (Odieta, 1999). Increase in the sediment nutrient can be attributed to differences in sediment nutrient input from the drainage systems of the various locations. The mean phosphate concentration recorded is 8.10 mg/kg. This compares favorably to the range value of 0.29 - 244 mg/kg obtained by Braide et al. (2004) and Ezekiel et al. (2011) which recorded 13.43 mg/kg. Phosphate and nitrate were exceptionally high in October and November and can be attributed to the ability of the creek to accumulate nutrients from different anthropogenic sources during this period. This phosphates and nitrates are the key limiting nutrients for eutrophication, and results show high nutrient load which will make the biota to be productive, destruction of the creeks, decay and sedimentation as well as nutrient enrichment (Adeyemo, 2003). High Levels of both phosphate and nitrate can lead to eutrophication, which increases growth of algae and eventually decreases dissolved oxygen levels in the creeks (Murdoch et al., 2001).

Total organic content/matter in the sediments of the study locations indicate the presence of contaminants in the creeks coming from anthropogenic activities. Ogbe Creek remained the only creek with reoccurring low concentrations in the parameters studied. This is an indication of increasing human activities and a perturbed creek. The mean organic carbon content of the study is 6.77% while organic matter is 11.66%. The results of the study are higher compared to Sombreiro River which ranged between 2.02 and 4.134% with a mean of 2.68% (Ezekiel et al., 2011) and also below the mean value of 1.02% obtained from Lake Kariba by Mclachlan and Mclachla (1971). TOC and TOM were recorded to be highest between June and August. The level of total organic matter decomposition may be attributed for the variation in total organic carbon content. The difference in the organic content of the sample locations are attributed to the differences in deposition of organic matter at the various locations.

The Abule Agege Creek (Station A) has pH values that range between 6.0 and 7.20. This disagreed with the report of Brown and Kola-Banjo (1998) on the same creek during the late months of dry season and beginning of rainy season where an acidic pH between 5.0 and 6.6 was recorded. The mean value of the sediment pH obtained in this study can be compared favorably with the report of Braide et al. (2004) who reported alkaline range of 6.9 - 7.8 from the freshwater stream of Minichida Stream, Niger Delta.

The increase in acidity and alkalinity in the creeks in October and November with highest in Abule Eledu and Ogbe Creeks may be attributed to the fact that Abule Eledu Creek and Ogbe Creek are in urban location characterized by anthropogenic input, land drainage pollution and anthropogenic sediment accumulation arising from the presence of automobile workshops photographic workshops and other commercial activities,

mechanic workshops, wash back of the spoils and chemical wastes from auto-mechanic and car wash shops at the bank of the creeks (Braide et al., 2004).

Conclusion

The deterioration in the physico-chemical quality and increase in the nutrient level observed in this study is alarming and has been attributed to the accumulation of organic matter, contaminants and pollution going on at the time of research. The increase in phosphate and nitrates depict an environmentally stressed ecosystem which resulted in the low values of dissolved oxygen concentrations. Seasonal variations also contributed to the high levels of concentrations in the parameters studied with alkalinity, acidity, phosphates and nitrates having higher concentrations in October and November. It can be deduced that different study stations differed with the level of concentrations due to the type of anthropogenic stressors occurring in the stations. Water and sediments serve as a source of food and habitat to substratum species and man hence, periodic monitoring and preventive measures are necessary to save the creeks from eutrophication and total degradation. Further studies are therefore needed to be carried out especially on the effect of anthropogenic impacts and seasonal variations on the substratum species.

CONFLICT OF INTERESTS

The authors have not declared any conflict of interests.

REFERENCES

- Abowei JF, Sikoki TM (2005). Assessment of Heavy Metals Pollution in Soils and Vegetation around Selected Industries in Lagos State, Nigeria. *Journal of Geoscience and Environment Protection* 3:11-19.
- Adekunle JO, Eniola DP (2008). *Water Pollution Management and Control*. Double Trust Publications Company, Port Harcourt. p.236.
- Adeyemo OK (2003). Consequences of pollution and degradation of Nigerian aquatic environment on fisheries resources. *The Environmentalist* 23(4):297-306.
- Adeyemo OK, Adedokun OA, Yusuf RK, Adeleye EA (2008). Seasonal Changes in Physico-Chemical Parameters and Nutrient Load of River Sediments in Ibadan City, Nigeria. *Global Nest Journal* 10(3):326-336.
- Ajao EA (1990). The influence of domestic and industrial effluents on populations of sessile and benthic organisms in Lagos lagoon. Ph.D Thesis. University of Ibadan, Nigeria P 413.
- Ajao EA, Fagade SO (1990). A study of the sediment and community in Lagos lagoon Nigeria. *Journal of Oil Chemical Pollution* 7:85-117.
- Ayoade AA, Fagade SO, Adebisi AA (2006). Dynamics of limnological features of two manmade lakes in relation to fish production, *African Journal of Biotechnology* 5(10):1013-102.
- Braide SA, Izonfuo WAL, Adakwu PU, Chinda AC, Obinwo CC (2004). Water quality of miniweja stream, a swamp forest stream receiving non-point source waste discharge in Eastern Niger Delta, Nigeria. *Scientific African* 3(1):1-8.
- Brown CA, Kola-Banjo OO (1998). The ecology of an estuarine creek and pond in southern Nigeria. Unpublished Research Survey. Department of Marine Sciences, University of Lagos P 85.

- Edokpayi CA, Okenyi JC, Ogbeibu AE, Osimen EC (2000). The effect of human activities on the macrobenthic invertebrates of Ibiekuma stream, Ekpoma, Nigeria. *Bioscience Research Communications* 12(1):79-87.
- Edokpayi CA, Ayorinde AO (2009). Physical, Chemical and Macrobenthic Invertebrate Fauna Characteristics of Swampy Water Bodies within University of Lagos, Nigeria. MSc. Dissertation, Department of Marine Sciences, Faculty of Science, University of Lagos, Nigeria P 9.
- Edokpayi CA, Nkwoji JA (2007). Annual changes in the Physico-chemical and Macrobenthic invertebrate characteristics of the Lagos lagoon sewage dump site at the Iddo Southern Nigeria. *Ecology Environment and Conservation* 13(1):13-18.
- Edokpayi CA, Olowoporoku AO, Uwadiae, RE (2010). The hydrochemistry and macrobenthic fauna characteristics of an urban draining creek. *International Journal Biodiversity and Conservation*. 2(8):196-203.
- Emmanuel BE, Onyema IC (2007). The plankton and fishes of a tropical creek in south-western Nigeria. *Turkish Journal of Fisheries and Aquatic Sciences* 7(2):105-114.
- Ezekiel EN, Hart AI, Abowei JFN (2011). The Sediment Physical and Chemical Characteristics in Sombreiro River, Niger Delta, Nigeria *Research Journal of Environmental and Earth Sciences* 3(4):341-349.
- Holme F (2001). Dissolved oxygen analysis and sediment interaction Oxygen Demand, Modeling and Measurement. Institute of Natural Resources, University of Georgia, Athens. In :Hatcher KJ (Ed) pp. 259-280.
- International Atomic Energy Agency (IAEA) (2003). Collection and preparation of bottom sediment samples for analysis of radionuclides and trace elements. *Nutritional and Health-Related Environmental Studies Section P* 130.
- Macer D (2000). Love the environment and bioethics. *Turkish Journal of Medical Ethics* 8:7-8.
- Mclachlan AJ, Mclachlan SM (1971). Benthic fauna and sediments in the Newly Created Lake Kariba (Central Africa). *Ecology* 52:800-809.
- McLusky DS, Elliott M (1997). Assessing the chronic Toxicity of Marine and Estuarine Sediment- Associated Contaminants. Plenum Press New York pp. 109-122.
- Murdoch T, Cheo M, O'Laughlin K (2001). *Streamkeeper's Field Guide: Watershed Inventory and Stream Monitoring Methods*. Adopt-A-Stream Foundation, Everett, WA. P 297.
- Nkwoji JA, Yakub A, Ajani GE, Balogun KJ, Renner KO, Igbo J K, Ariyo AA, Bello BO (2010). Seasonal Variations in the Water Chemistry and Benthic Macro invertebrates of a South Western Lagos lagoon, Nigeria. *Journal of American Science* 6(3):85-92.
- Nkwoji JA, Igbo JK, Mojekwu T O, Obienu JA, Adeleye AO (2011). Hydrochemistry and Sediment Characteristics of Western Lagos Lagoon, Nigeria. *Nigerian Continental Journal of Environmental Sciences* 5(2):19-24.
- Nwankwo DI (1996). Notes of the effect of human induced stressors in parts of the Niger Delta. *Nigeria Ecology Studies* 22(182):71-78.
- Nwankwo DI, Akinsoji A (1992). Epiphyte community on water hyacinth *Eichorniacrassipes* (MART) solutions in coastal water of South Western Nigeria. *Archive for Hydrobiology* 124(4):501-511.
- Nwankwo DI, Onyema IC, Adesalu TA (2003). A survey of harmful algae in coastal waters of South-western Nigeria. *Journal of Nigerian Environmental Society* 1(2):241-246.
- Odiere WO (1999). *Environmental physiology of animals and pollution. Diversified Resources, Lagos, Nigeria P* 26.
- Olowu R A, Ayejuyo OO, Adewuyi, G. O, Adejoro, IA, Denloye, AAB, Babatunde AO, Ogundajo AL (2010). Determination of Heavy Metals in Fish tissues, Water and Sediment from Epe and Badagry Lagoons, Lagos, Nigeria. *E-Journal of Chemistry* 7(1):215-221.
- Oschwald A (1997). Sediment-water interactions. *Journal of Environmental Quality* 1:360-366.
- Sangodoyin AC (1991). *Designs of Networks for monitoring water quality. Water Resources Publications, Littleton, Colorado* 378 p.
- Wang W, Wang A, Chen L, Liu Y, Sun R (2002). Effects of pH on Survival, Phosphorus Concentration, Adenylate Energy Charge and Na⁺-K⁺ ATPase Activities of *Penaeus chinensis* Osbeck Juveniles, *Aquatic Toxicology* 60:75-83.

Related Journals:

